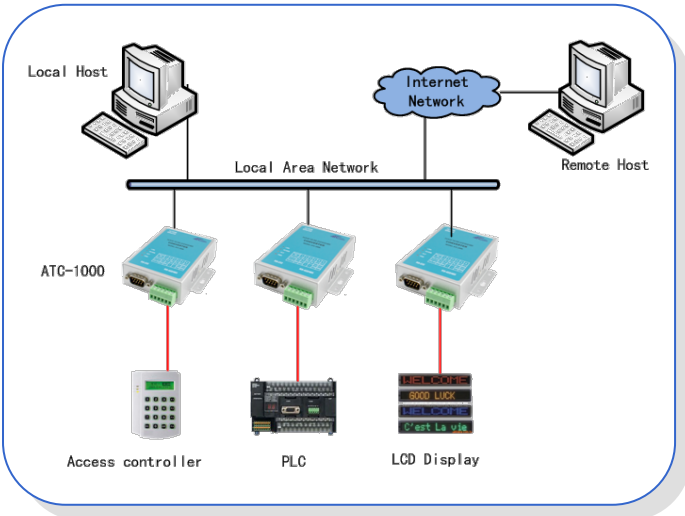


**Product Features**

- RS-232/422/485 3 in 1 interface
- Support 10/100Mbps Ethernet port
- Supports 4-wire and 2-wire RS-485 work mode
- Automatic data control for RS-485
- Supports 24VDC industrial power supply
- Terminal blocks for RS-422/485 installation
- Configuration via webpage and windows utility
- Supports virtual serial port,TCP Server/Client and UDP work mode
- Built-in watchdog
- CE, RoHS and FCC Certifications
- + Much more!



**Product Description**

The XS1200 is good low-cost solution for most office, warehouse and factory environments including industries such as factory automation, alarm and security, laboratory and manufacturing. Ideal for connecting most serial devices such as CNC's, PLC's, printers, sensors, cameras, motor drives, scanners or any other standard RS232, RS485 or RS422 serial device.

The XS1200 serial to Ethernet converter can be managed through a web-browser or the downloadable management software. Multiple COM port and network settings can be configured.

Pin configuration

| Pin     | RS232 |
|---------|-------|
| 2       | RX    |
| 3       | TX    |
| 5       | GND   |
| 7       | CTS   |
| 8       | RTS   |
| 1,4,6,9 | NC    |

**Included items**

- XS1200 serial server 1 PCS
- Documentation 1PCS
- Power adapter 9V@1A

|       | 1        | 2        | 3  | 4  | 5             | 6   |
|-------|----------|----------|----|----|---------------|-----|
| RS485 | RS485 R+ | RS485 R- | T+ | T- | VCC 9 – 24VDC | GND |
| RS422 | R+       | R-       | T+ | T- | VCC 9 – 24VDC | GND |

RS485/RS422 terminal configuration

## Specifications

| Serial Interface              |   |                      |                                |
|-------------------------------|---|----------------------|--------------------------------|
| Interface Type                | RS-232/485/422 3 in 1 (optional)  |                      |                                |
| Data Rate                     | RS-232  | 1200 ~ 115200bps     | RS-422/485<br>1200 ~ 921600bps |
| Data Length                   | 5,6,7,8 bits  |                      |                                |
| Parity                        | Odd, Even, None   |                      |                                |
| Stop Bits                     | 1,1.5,2 bits  |                      |                                |
| Flow Control                  | None, Software: Xon/Xoff, Hardware: RTS/CTS   |                      |                                |
| Connector                     | RS-232  | DB-9 male            |                                |
|                               | RS-422/485  | 6-pin Terminal block |                                |
| Serial Line Protection        | 600W for RS-232/422/485   |                      |                                |
| Network Interface             |   |                      |                                |
| Interface Type                | Ethernet 10/100Mbps (Auto-Sensing)  |                      |                                |
| Connector                     | 8-pin RJ-45   |                      |                                |
| Magnetic Isolation Protection | Built-in 1.5KV  |                      |                                |
| System                        |   |                      |                                |
| CPU                           | Embedding a 8-bit pipelined RISC. Maximum operating frequency of 100Mhz (100 MIPS)                  |                      |                                |
| Memory                        | 32KB SRAM.512KB Flash memory  |                      |                                |
| Software                      |   |                      |                                |
| Network Protocols             | ICMP, IP, TCP, UDP, DHCP, BOOTP, Telnet, DNS, HTTP, ARP   |                      |                                |
| Configure Options             | Web Page, Windows Utility   |                      |                                |
| OS support                    | Windows95/98/ME/NT/2000/XP/2003/WIN7/WIN8/XP x64/2003 x64/WIN7 x64/WIN8 x64、<br>Linux real、TTY、UNIX |                      |                                |
| LED Indicators                |   |                      |                                |

|                                     |   |   |
|-------------------------------------|---|---|
| LINK                                | 10/100Base-TX Link & Activity Indicator   |   |
| TXD                                 | Data Transmitting from Ethernet to Serial |   |
| RXD                                 | Data Transmitting from serial to Ethernet |   |
| PWR                                 | Power indicator                           |   |
| Power Supply                        | 9~24VDC@1A                                |   |
| <b>Physical Characteristics</b>     |   |   |
| Installation                        | DIN-Rail Mounting                         |   |
| Housing                             | Steel (1mm)                               |   |
| Weight                              | 0.5Kg                                     |   |
| Dimensions                          | Without ears                              | 100 × 67 × 26 mm(3.94 × 2.64 × 1.02 in) |
|                                     | With ears                                 | 100 × 86 × 26 mm(3.94 × 3.39 × 1.02 in) |
| <b>Environmental Limits</b>         |   |   |
| Operating Temperature               | -25 ~ 70°C (-13 ~ 158°F)                  |   |
| Storage Temperature                 | -40 ~ 85°C (-40 ~ 185°F)                  |   |
| Ambient Relative Humidity           | 5% to 95%(non-condensing)                 |   |
| <b>Standards and Certifications</b> |   |   |
| RoHS, CE, FCC                       |   |   |