

Virtual COM (VCOM) driver Installation Guide

for Xeta Server XS1000

(VCOM IC Plus Corp ver. 3.31, 3.6.2 and 3.6.6)

Please carefully follow this guide to successfully install the virtual COM software for Windows 98, 2000, 2003, XP, Vista, 7, 8 and 10 (32/64-bit).

This installation guide is based on Windows 7 32-bit but same installation procedure is used for other versions of Windows.



Connecting the Xeta Server	2
Assigning a static IP	2
Setting up the Virtual COM software (VCOM)	6
Creating a COM port with VCOM	8
Configuring the parameters	13
Making a loop-back test	16
Known issues.....	22

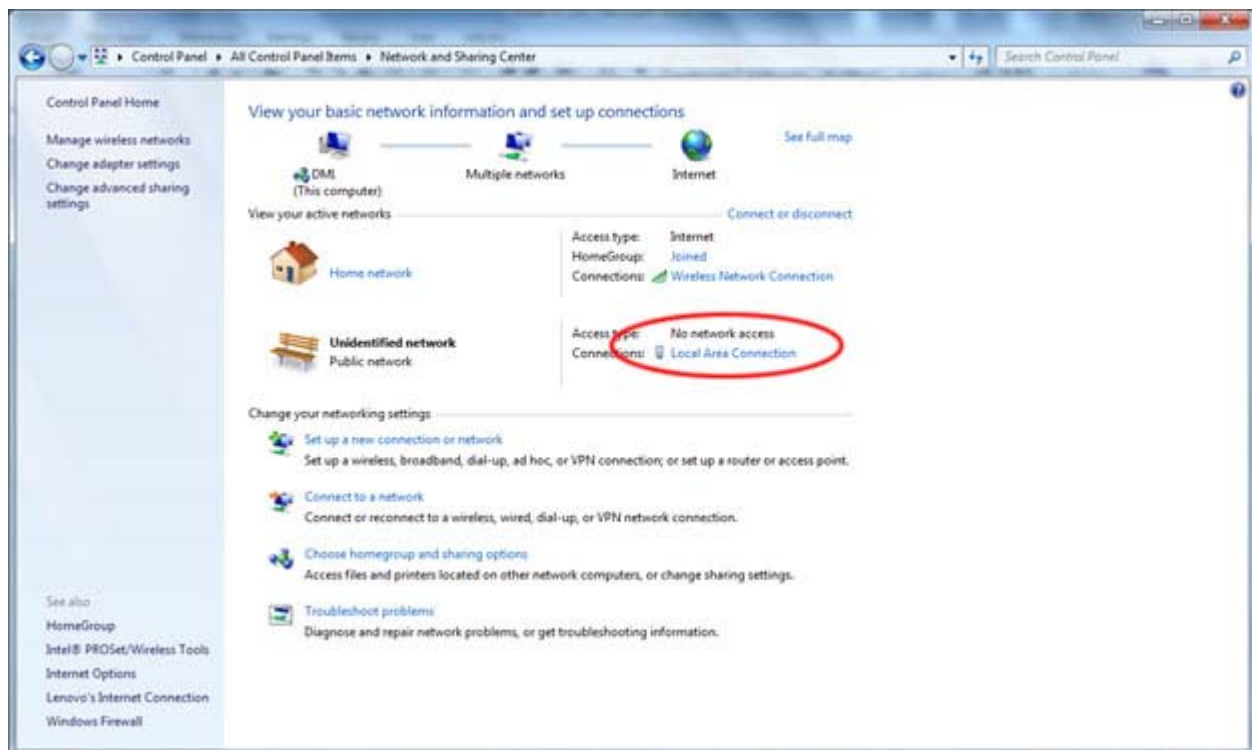
Connecting the Xeta Server

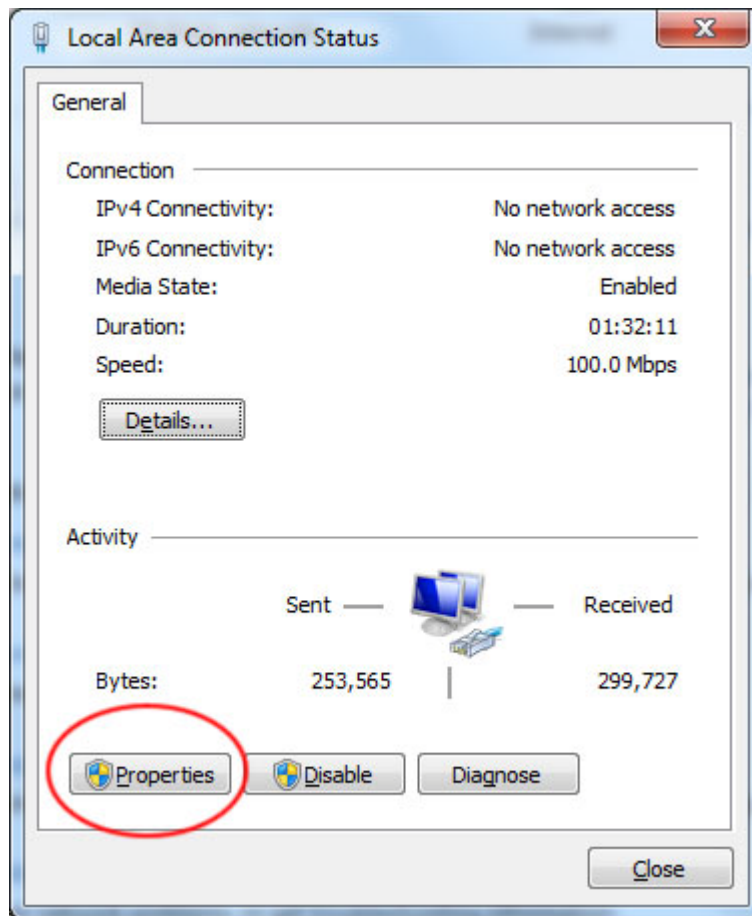
1. Connect the Xeta Server to your computer using a standard cross over cable (EIA/TIA T568B) LAN cable.
2. Connect the Xeta Server to the power supply and turn on the power.

Assigning a static IP

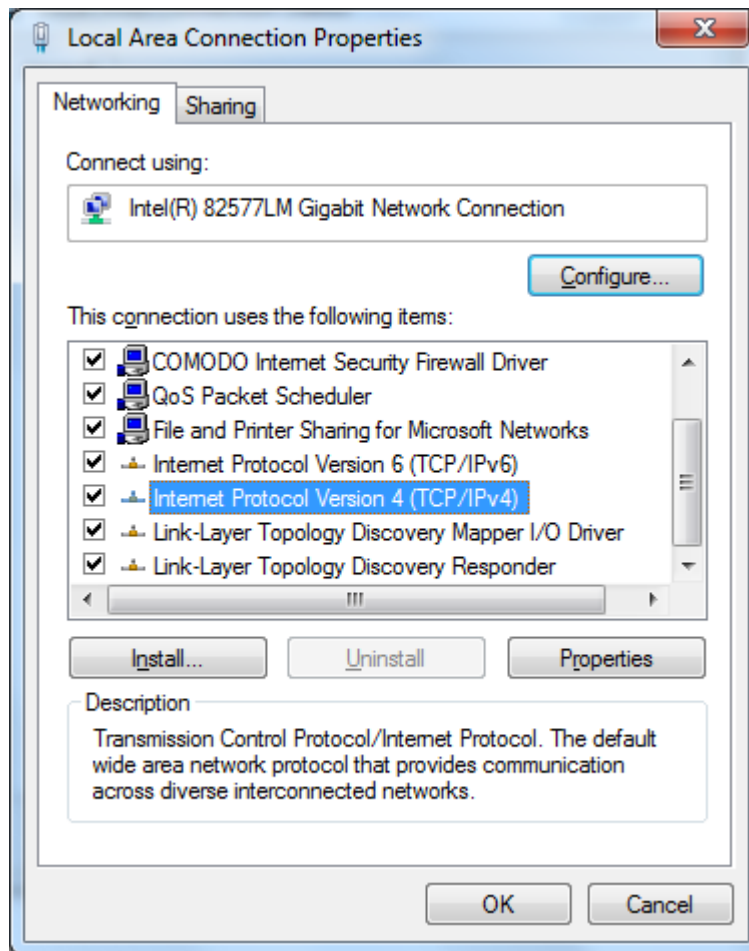
The IP address of the Xeta Server is **192.168.2.1**. For your computer to be able to find the Xeta Server you need to assign a static IP address in the **192.168.2.2 to 192.168.2.254** range to the network connection to where you connect the Xeta Server:

1. Click Start and go to: Control Panel\All Control Panel Items\Network and Sharing Center.
2. Click on 'Local Area Connection' (this is the connection where the Xeta Server is connected). If you have not connected the Xeta Server to your computer, or if the cable is incorrectly connected you might not be able to see this 'Local Area Connection', so make sure the Xeta Server is properly connected to your computer:

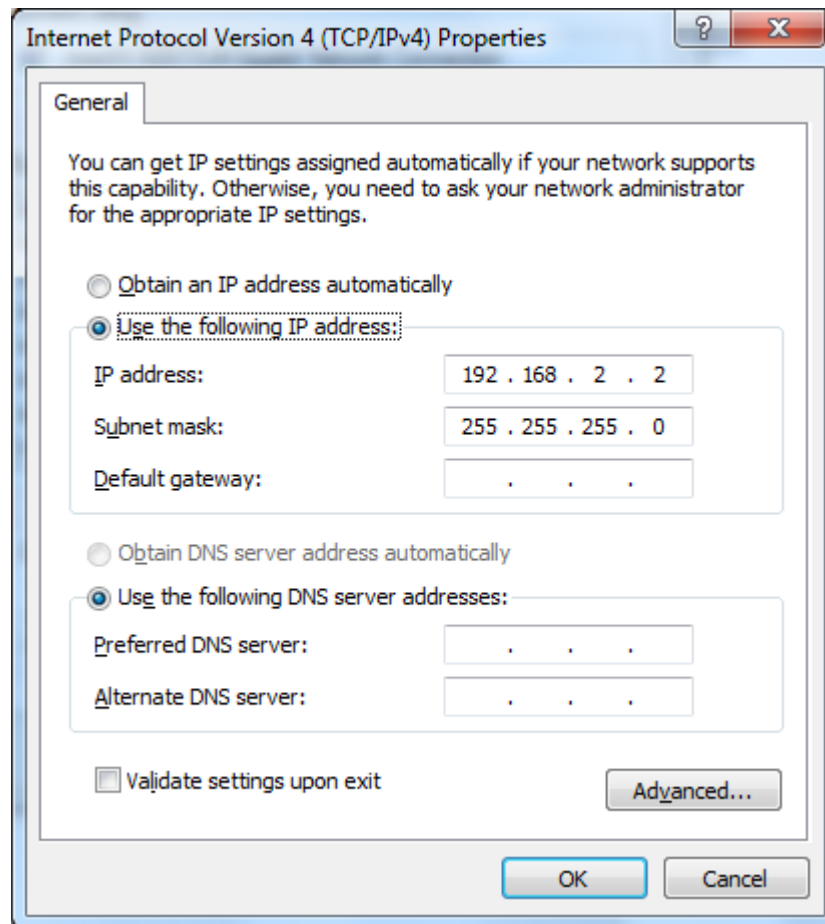




3. Click on 'Properties'.



4. Highlight the 'Internet Protocol' and click 'Properties'.



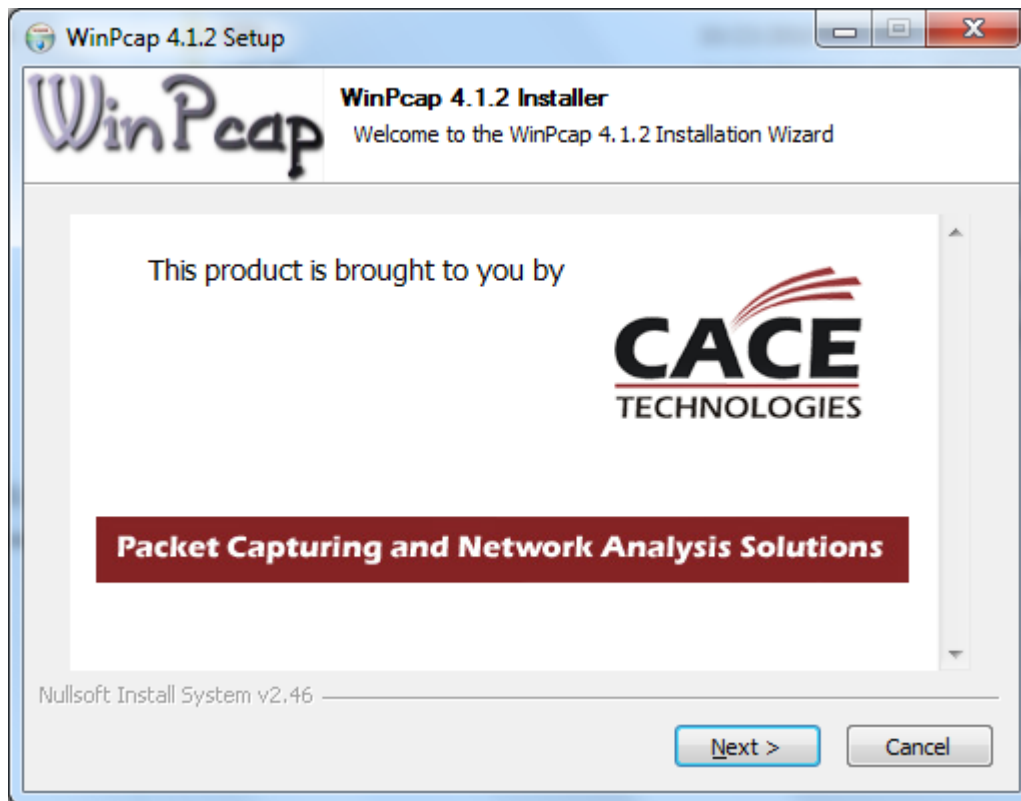
5. Enter a static IP address in the **192.168.2.2 to 192.168.2.254** range and a Subnet mask of 255.255.255.0 and click OK. Click OK at the Local Area Connection Properties window and close the Local Area Connection Status window.
You have now assigned a static IP address to the network connection where to the Xeta Server is connected.

Setting up the Virtual COM software (VCOM)

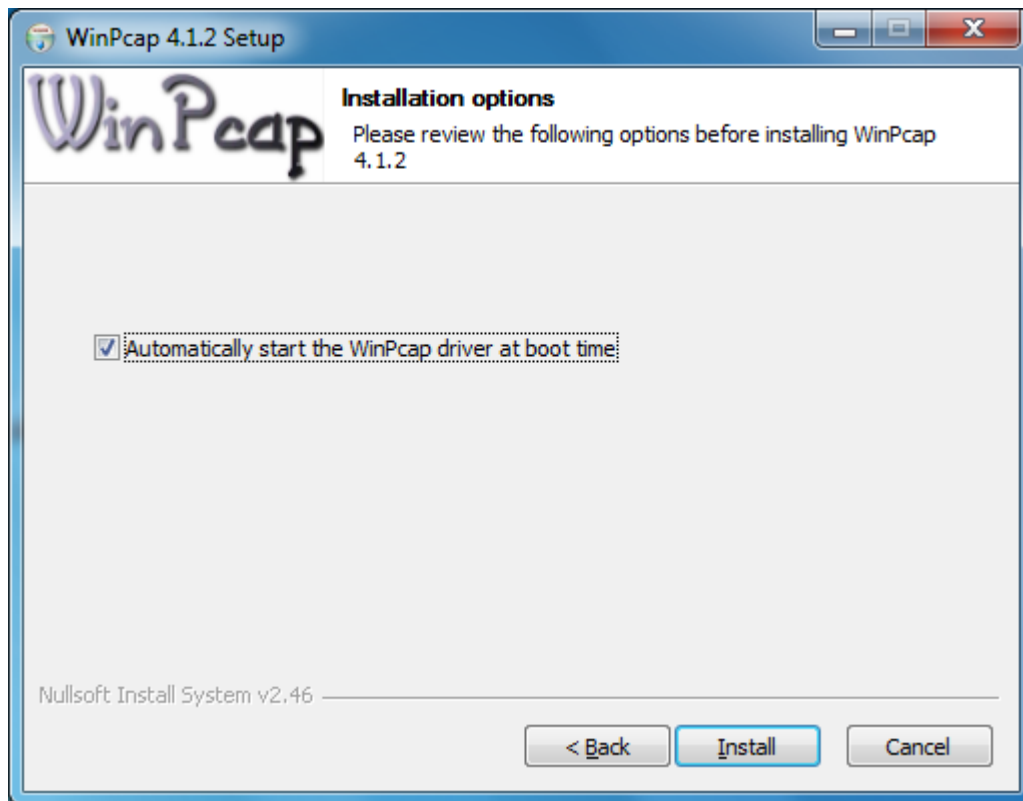
To be able to create a serial COM port on your computer which the Xeta Server can connect through, you need to use a Virtual COM software.

Download the most recent version of VCOM from www.USconverters.com. Unzip the downloaded folder, find and run the installation setup called VCOMSetup

During installation the program WinPcap will be installed.



Click Next.



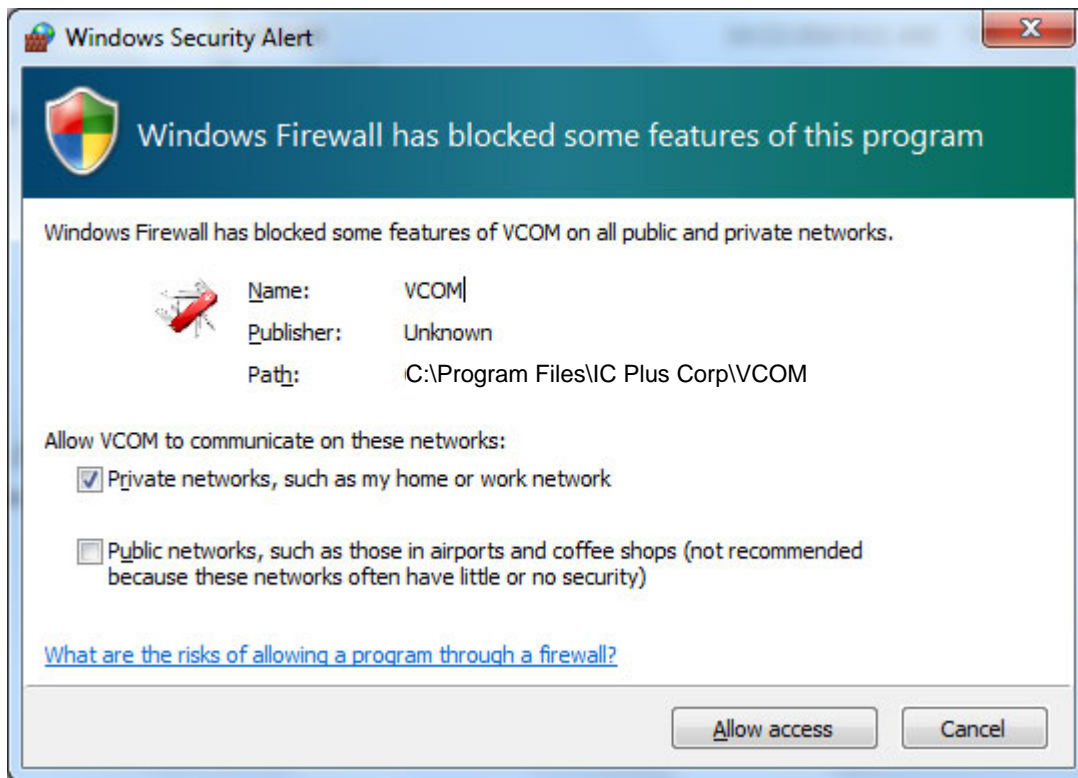
Chose to 'Automatically start the WinPcap driver at boot time' and click 'Install'.

Reboot your computer after the installation has finished!!

Creating a COM port with VCOM

1. Start VCOM.exe.

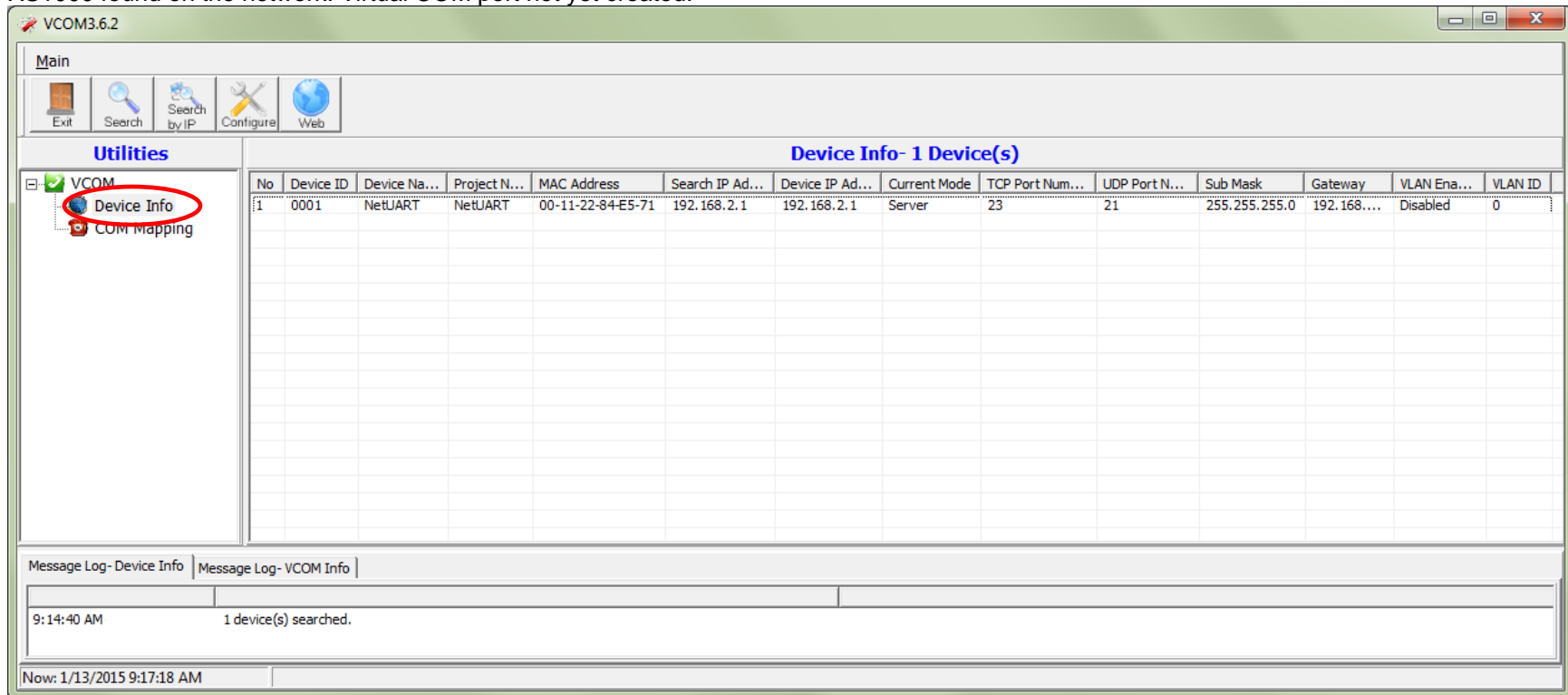
If you are getting a Windows Security Alert, allow VCOM to communicate with Private networks:



2. With the Xeta Server successfully connected to your computer with a static IP address in the 192.168.2.2 to 192.168.2.254 range and connected to the power supply, click the 'Search' button.

VCOM should now search for and find the connected Xeta Server and list it on line one in the Device Info window.

XS1000 found on the network. Virtual COM port not yet created:



3. To create a COM port click 'COM Mapping' under the 'Utilities' pane and click the 'Add' button. A new window opens which lists the connected Xeta Server(s). Click on the server listed, this will bring up the information of the server in the text fields, and click 'OK'.

Add VCOM [X]

[Rescan]

No	Device ...	MAC ...	Search IP...	Device IP ...	Curre...	TC...	UDP
1	NetUART	00-11...	192.168....	192.168.2.1	Server	23	21

TCP/UDP ☒ TCP ☐ UDP

Server/Client ☐ Server ☒ Client

IP Address Local Port

COM COM Remote Port

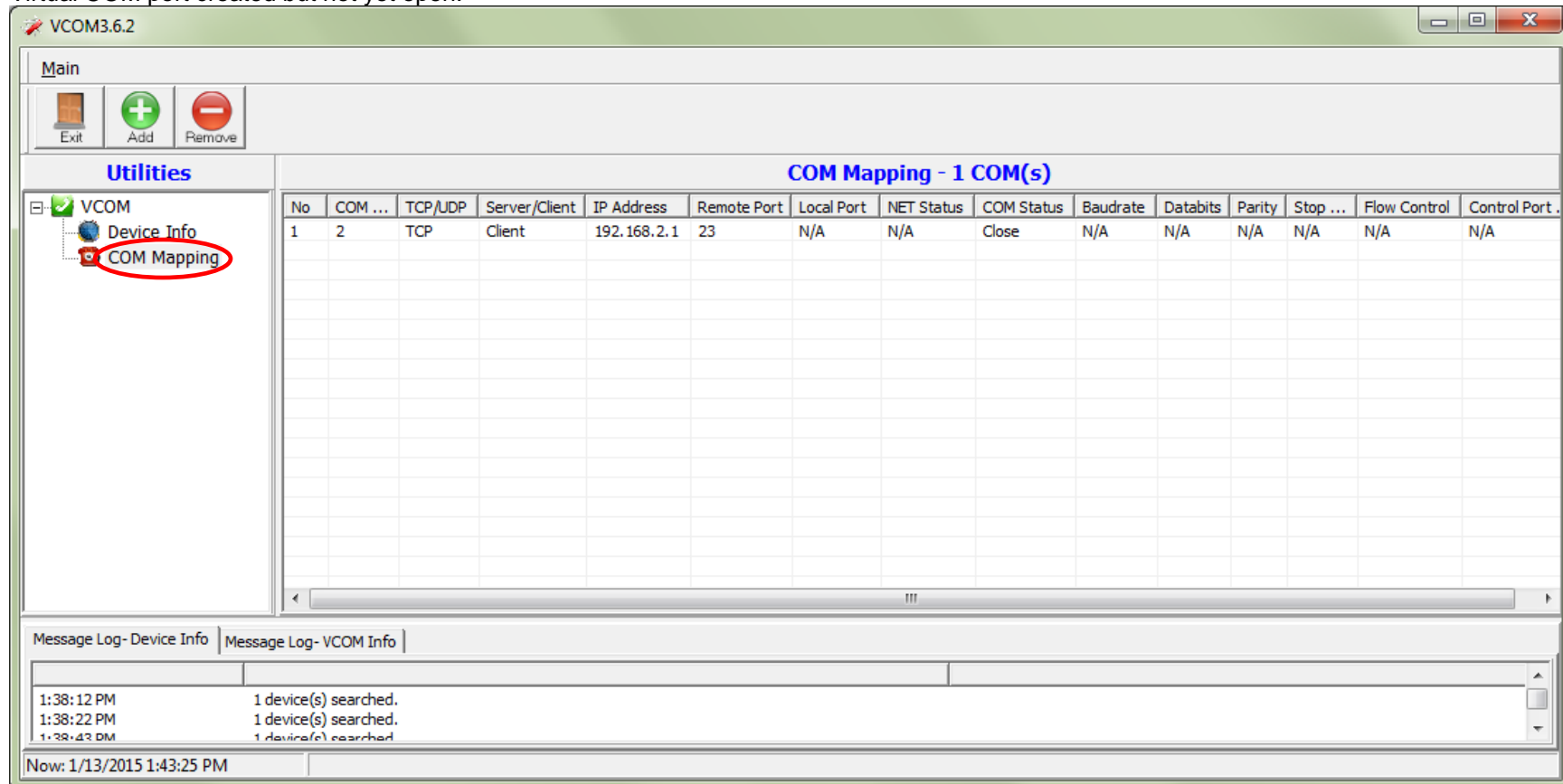
☒ Enable Control Connection

second(s) for reconnection interval.

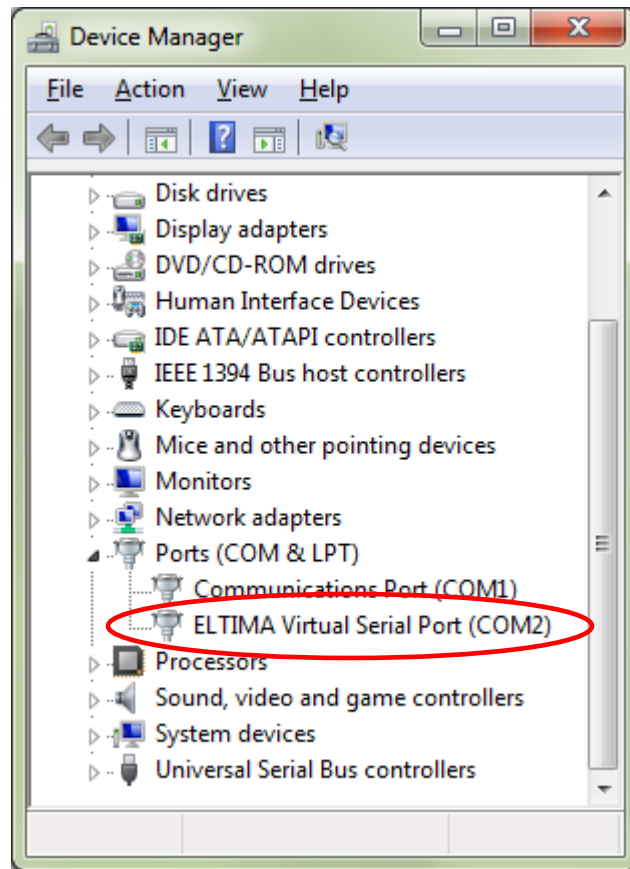
[OK] [Cancel]

The COM port will now be listed under the 'COM Mapping' window.

Virtual COM port created but not yet open:



To further check if the COM port was successfully installed go to Windows Device Manager where the COM port should be listed under 'Ports (COM & LPT)':



You have now successfully created a serial RS232 COM port!

Configuring the parameters

1. To configure the parameters of the Xeta server you can click on the 'Configure' button within the VCOM utility. A prompt will open for you to enter the Device account and Password information. Default Device account name is '**admin**' and password is '**system**':

A screenshot of a Windows-style dialog box titled "Input Attributes". The dialog has a light blue border and a white background. It contains two text input fields. The first field is labeled "Please Give Account:" and contains the text "admin". The second field is labeled "Please Give Password:" and contains five asterisks "*****". At the bottom of the dialog, there are two buttons: "OK" on the left and "Cancel" on the right.

Input Attributes

Please Give Account:
admin

Please Give Password:

OK Cancel

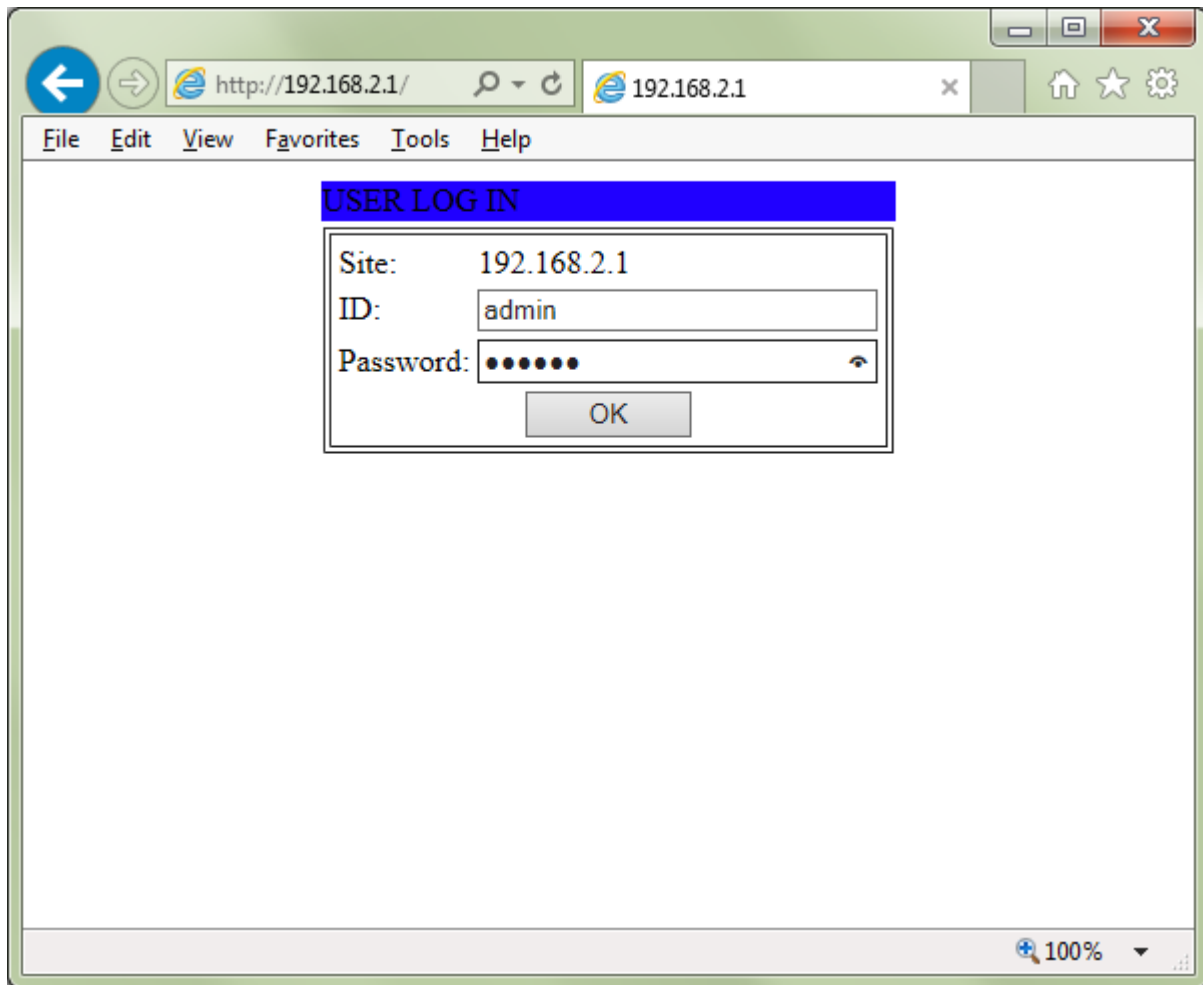
Click OK

The image shows a 'Configure Dialog' window with a light blue title bar. Inside, the 'Administrator' section contains four text input fields: 'IP Address' (192.168.2.1), 'Subnet Mask' (255.255.255.0), 'Gateway' (192.168.2.1), and 'DNS' (192.168.2.1). Below these is the 'IP Configure' section with two radio buttons: 'Static' (selected) and 'DHCP'. The window has a vertical scrollbar on the right and a horizontal scrollbar at the bottom.

Administrator	
IP Address	192.168.2.1
Subnet Mask	255.255.255.0
Gateway	192.168.2.1
DNS	192.168.2.1
IP Configure	
<input checked="" type="radio"/> Static <input type="radio"/> DHCP	

You can now configure your desired parameters

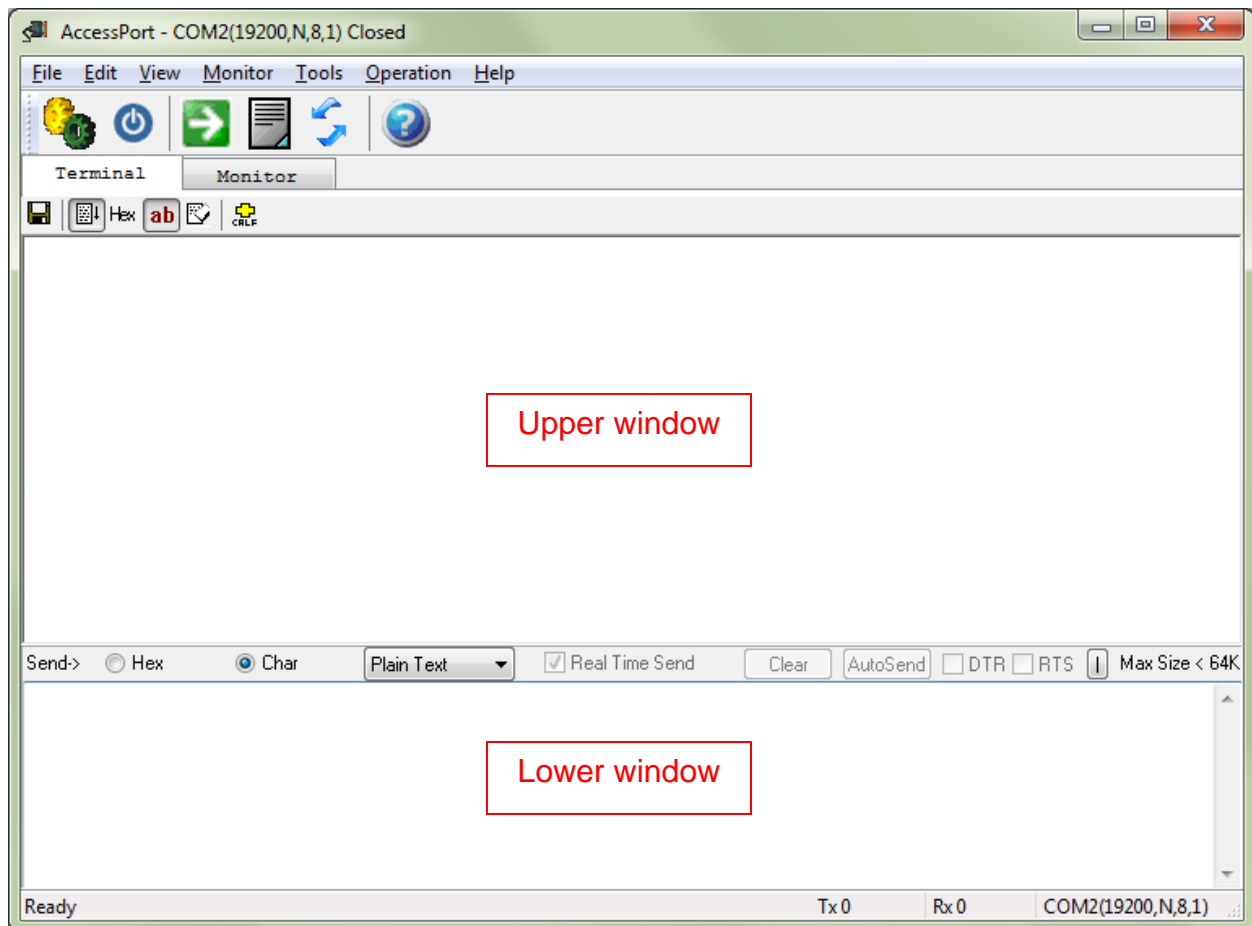
An alternative (and recommended) way of configuring the Xeta Server is to use a web browser. Simply open a web browser and enter the IP address of the Xeta Server in the address field:



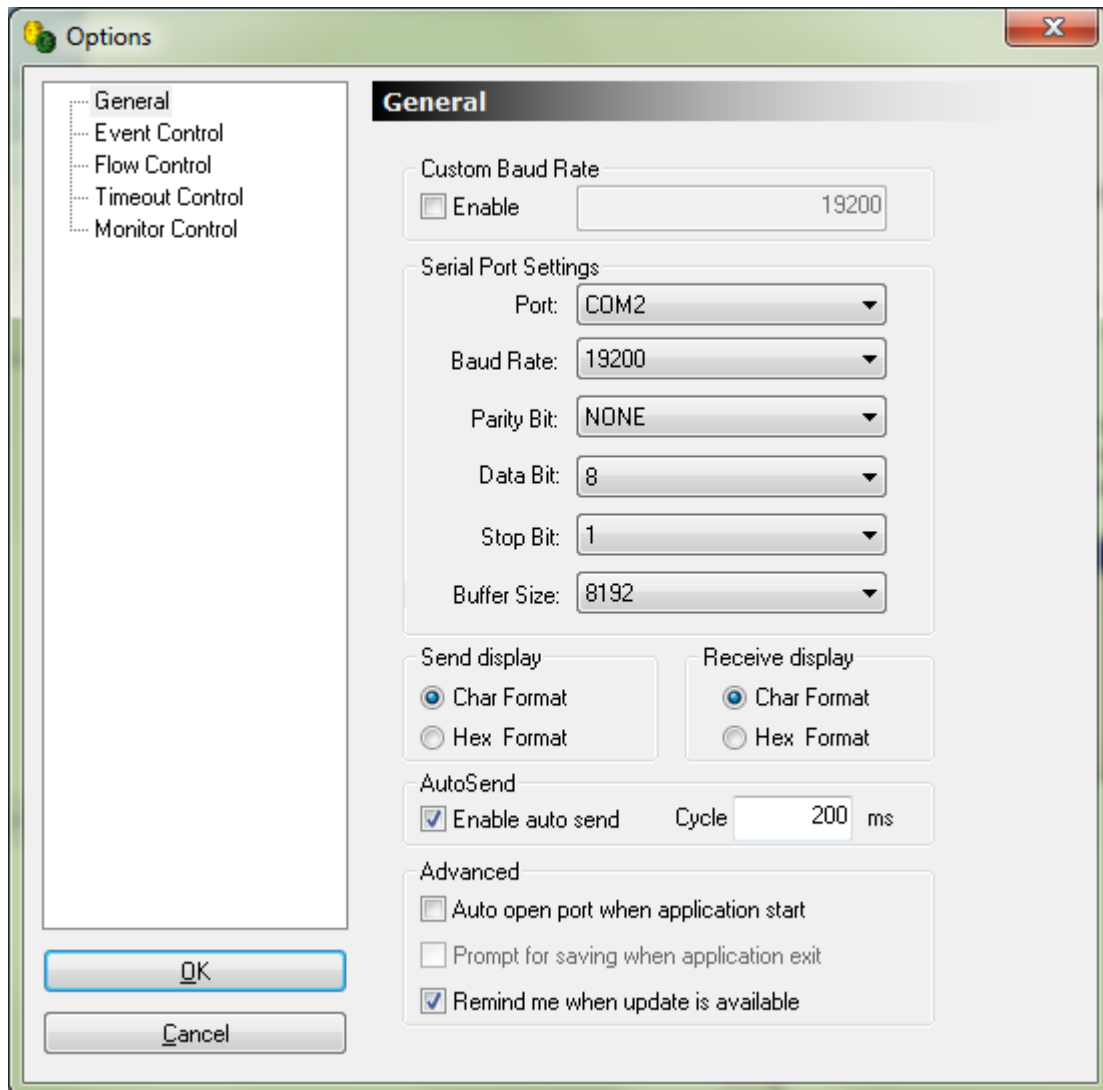
Making a loop-back test

To test if the XS1000 is working correctly and the drivers and cabling has been successfully setup you can make a loop-back test. This will verify if you can send and receive data both ways, from LAN to serial and serial to LAN.

Download and start AccessPort from www.usconverters.com. When you start AccessPort the first time you will be welcomed with the window shown below. The upper window is the 'receive' window where you receive data, and the lower window is the 'send' window where you can enter a text string to send.

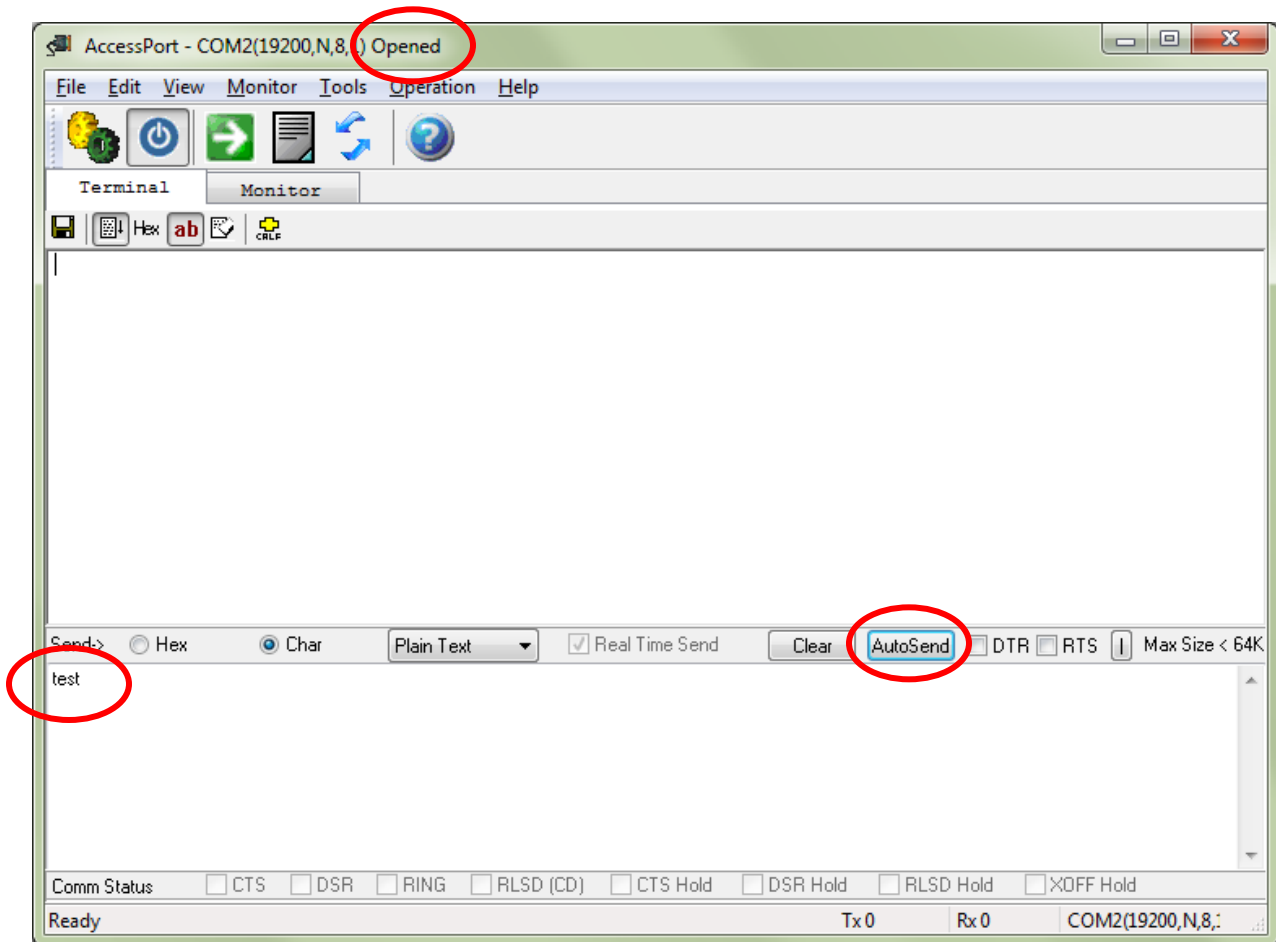


Click Tools -> Configuration in the menu bar, this will open the configuration window. Enter the correct information. In this case we have created COM port 2 so we select COM 2:



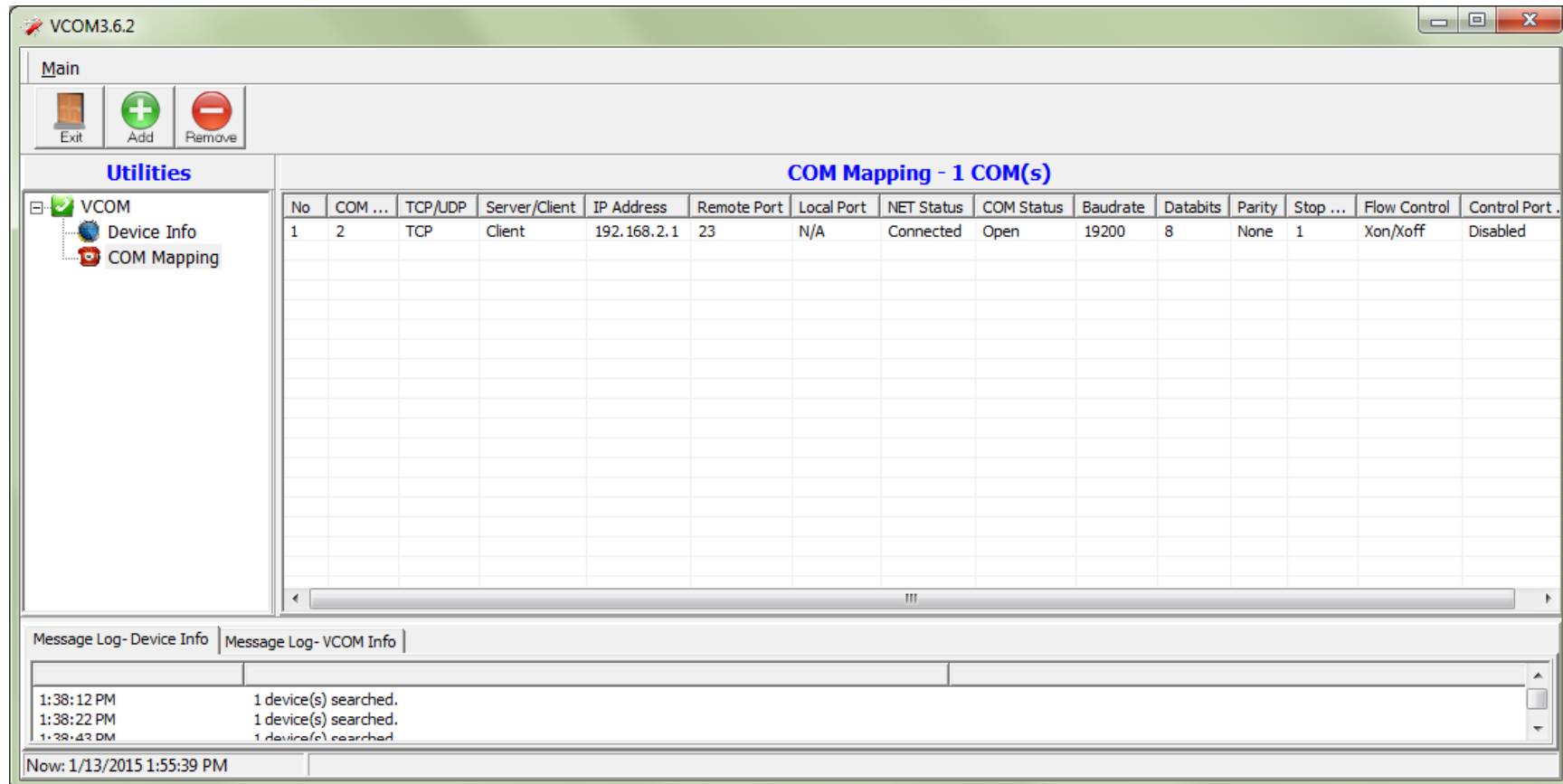
Click OK, this will automatically open the selected COM port if it has been correctly created by the Virtual COM software, and if the XS1000 is properly connected to your computer.

Enter a text string in the lower window and click the AutoSend button:

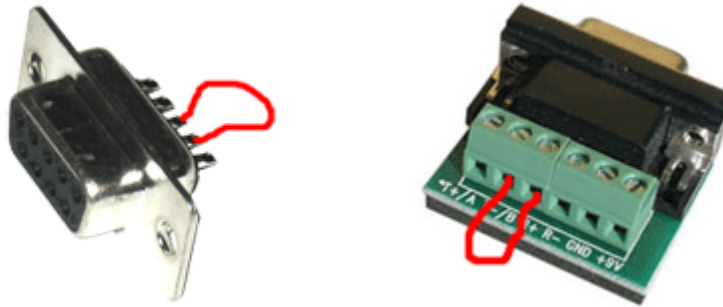


AccessPort will now start sending the text string to the COM port, the 'Link' and 'TX/RX' LED lights on the XS1000 should now start flashing.

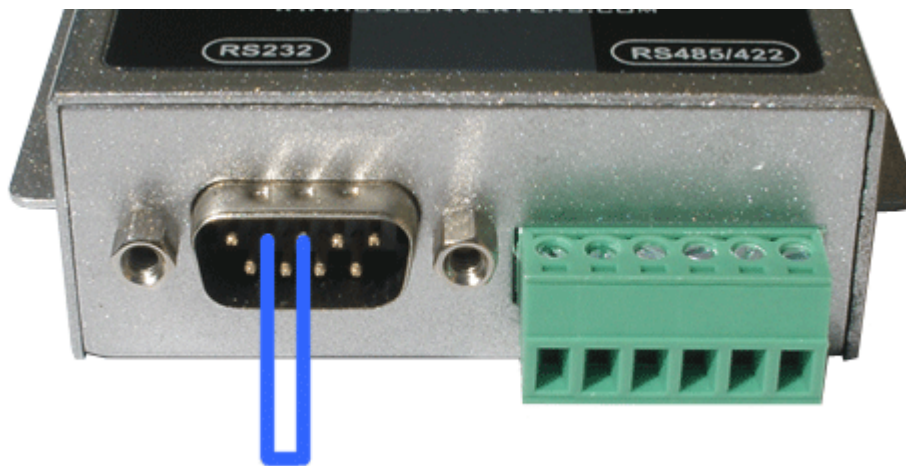
When the COM port has been opened by AccessPort, the status parameters in VCOM should be similar to this:



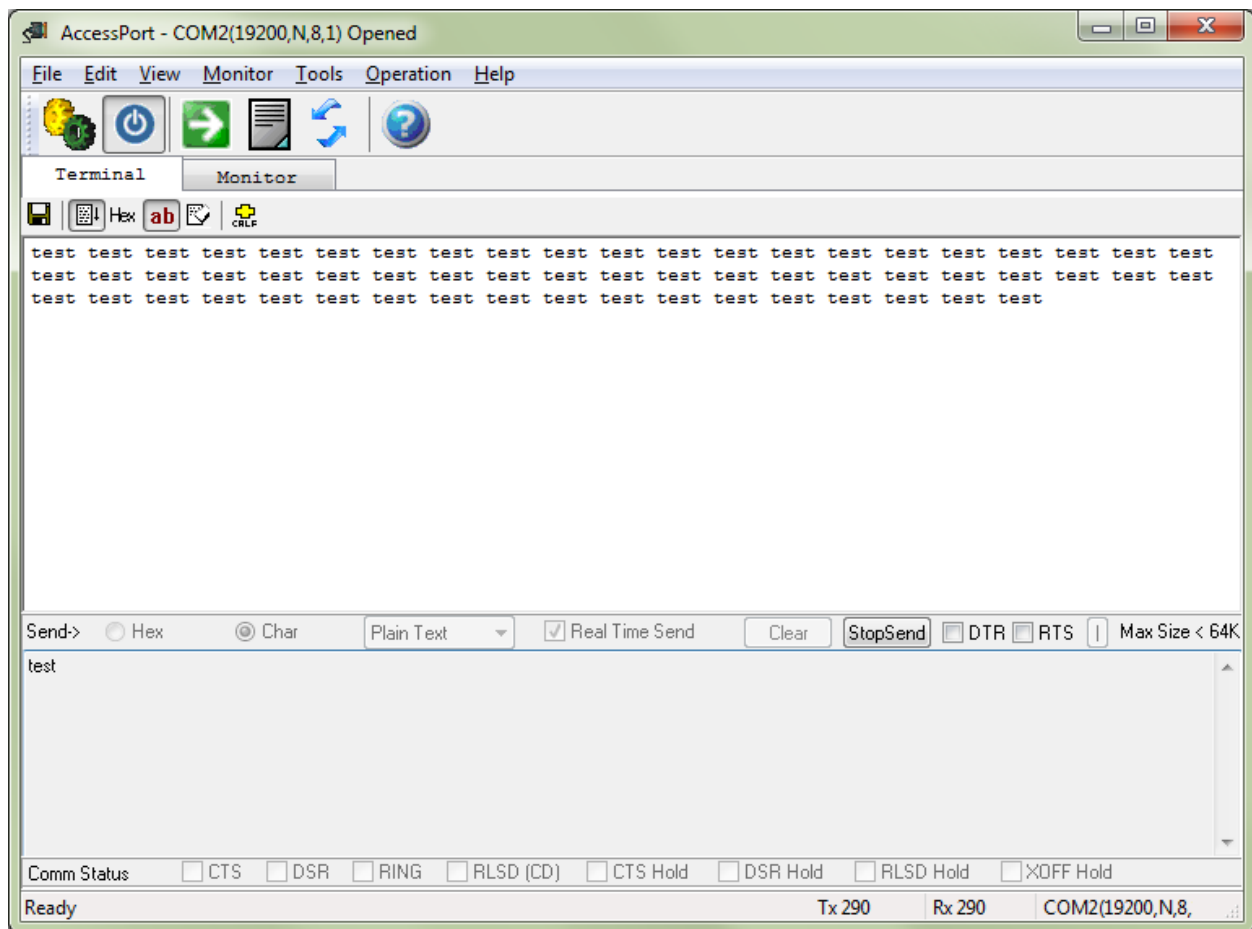
To confirm that the XS1000 can send and receive data you now need to connect the TX pin to the RX pin (pin 3 to pin 2) at the DB9 connector on the XS1000. The easiest and safest way to do this is by making a loop-back plug from a female DB9 connector or terminal header such as pictured below:



If you do not have any of these available you can manually make a connection from pin 2 to pin 3 at the DB9 connector by carefully using a piece of wire or even a paper clip to short the pins, as shown in the image below. Be careful not to short any other pins since this might damage the adapter.



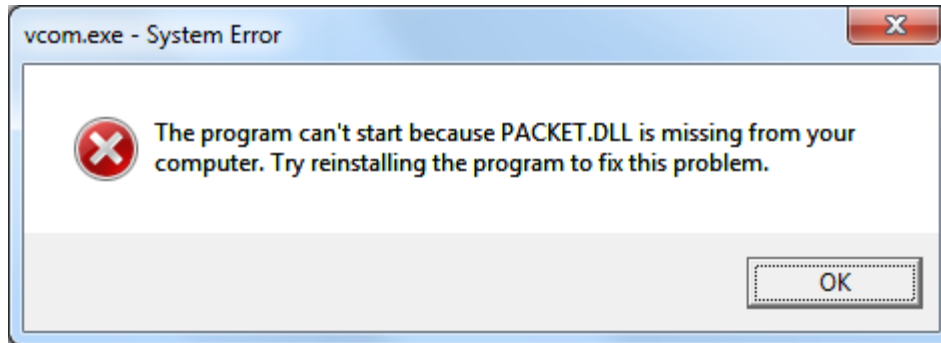
With the TX and RX pins looped you will now receive the text string in the receive window:



You have now successfully performed a loop-back test and verified that the converter can transmit and send data and that it is correctly connected and setup.

Known issues

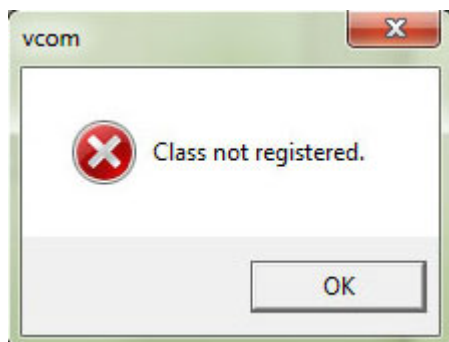
Error: When trying to run the VCOM software after the installation has completed you are getting the error: "The program can't start because the PACKET.DLL is missing from your computer".



The program WinPcap is automatically installed during installation of the VCOM software. If you are getting above error then WinPcap for some reason was not installed successfully or there might have been a conflicting version of the program on your computer.

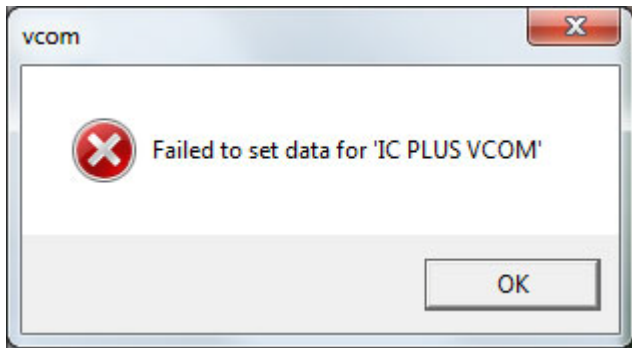
Solution: Download the latest version of WinPcap from www.winpcap.org and install it on your computer. Restart your computer. VCOM should now start.

Error: When trying to create a virtual COM port below error window appears:



Solution: Uninstall the VCOM software, restart your computer, re-install VCOM and install the latest version of WinPcap from www.winpcap.org.

Error: When disabling the Auto-start function below error window appears:



Solution: Run the VCOM program as Administrator (right-click the program icon and select "Run as Administrator").