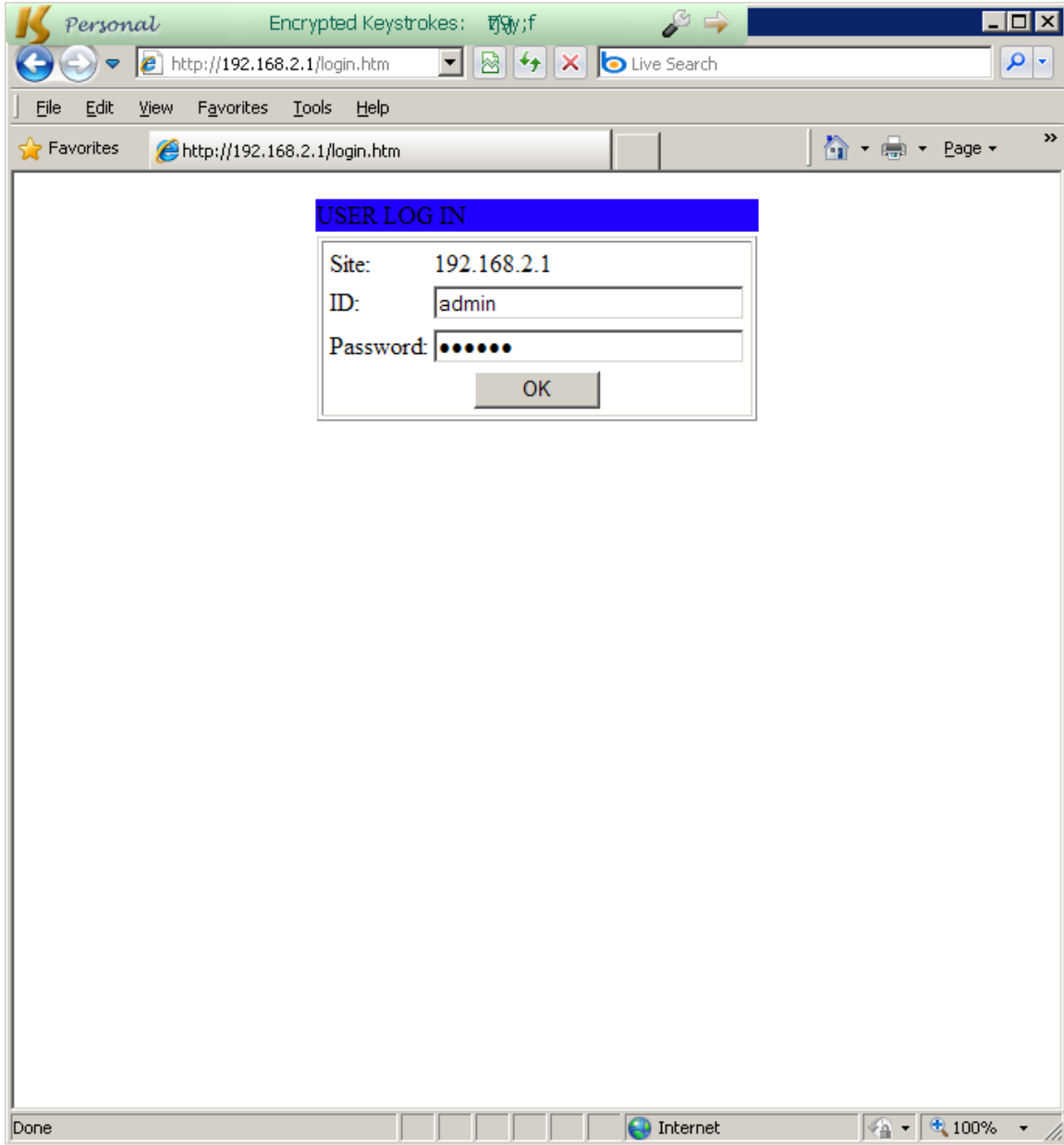


XS1000 Default Factory Settings



http://192.168.2.1/login.htm - Windows Internet Explorer

http://192.168.2.1/login.htm

File Edit View Favorites Tools Help

★ Favorites http://192.168.2.1/login.htm

[Administrator](#)
[Setting](#)
[TCP Mode](#)
[UDP Mode](#)
[UART](#)
[Reset Device](#)

Administrator Setting

Kernel Version	V1.43 2010/01/21
MAC Address	00:11:22:6B:27:8A
Nickname	<input type="text" value="NetUART"/>
IP Setting	
IP Address	<input type="text" value="192"/> . <input type="text" value="168"/> . <input type="text" value="2"/> . <input type="text" value="1"/>
Subnet Mask	<input type="text" value="255"/> . <input type="text" value="255"/> . <input type="text" value="255"/> . <input type="text" value="0"/>
Gateway	<input type="text" value="192"/> . <input type="text" value="168"/> . <input type="text" value="2"/> . <input type="text" value="1"/>
IP Configure	<input checked="" type="radio"/> Static <input type="radio"/> DHCP
Password Setting	
Username	<input type="text" value="admin"/> max:15
Password	<input type="password" value="•••••"/> max:15
Confirm	<input type="password" value="•••••"/>
<input type="button" value="Update"/>	
Load Default Setting to EEPROM	<input type="button" value="Load"/>

Note:

Done Internet 100%

[Administrator](#)
[Setting](#)
[TCP Mode](#)
[UDP Mode](#)
[UART](#)
[Reset Device](#)

TCP Control

Item	Value
Telnet Server/Client	<input checked="" type="radio"/> Server <input type="radio"/> Client <input type="radio"/> Disable
Port Number	<input type="text" value="23"/>
Remote Server IP Address	<input type="text" value="210"/> <input type="text" value="200"/> <input type="text" value="181"/> <input type="text" value="102"/>
Client mode inactive timeout	<input type="text" value="20"/> minute (1~99,0=Disable)
Server mode protect timeout	<input type="text" value="60"/> minute (1~98,0=Disable,99=Can't replace)

http://192.168.2.1/login.htm - Windows Internet Explorer

http://192.168.2.1/login.htm

File Edit View Favorites Tools Help

★ Favorites http://192.168.2.1/login.htm

[Administrator](#)
[Setting](#)
[TCP Mode](#)
[UDP Mode](#)
[UART](#)
[Reset Device](#)

UDP

Item	Value																				
Status	<input type="radio"/> Enable <input checked="" type="radio"/> Disable																				
Local Port	<input type="text" value="21"/>																				
Remote Address	<table border="1"><thead><tr><th>IP</th><th>Port</th></tr></thead><tbody><tr><td><input type="text" value="0"/> . <input type="text" value="0"/> . <input type="text" value="0"/> . <input type="text" value="0"/></td><td><input type="text" value="0"/></td></tr><tr><td><input type="text" value="0"/> . <input type="text" value="0"/> . <input type="text" value="0"/> . <input type="text" value="0"/></td><td><input type="text" value="0"/></td></tr><tr><td><input type="text" value="0"/> . <input type="text" value="0"/> . <input type="text" value="0"/> . <input type="text" value="0"/></td><td><input type="text" value="0"/></td></tr><tr><td><input type="text" value="0"/> . <input type="text" value="0"/> . <input type="text" value="0"/> . <input type="text" value="0"/></td><td><input type="text" value="0"/></td></tr><tr><td><input type="text" value="0"/> . <input type="text" value="0"/> . <input type="text" value="0"/> . <input type="text" value="0"/></td><td><input type="text" value="0"/></td></tr><tr><td><input type="text" value="0"/> . <input type="text" value="0"/> . <input type="text" value="0"/> . <input type="text" value="0"/></td><td><input type="text" value="0"/></td></tr><tr><td><input type="text" value="0"/> . <input type="text" value="0"/> . <input type="text" value="0"/> . <input type="text" value="0"/></td><td><input type="text" value="0"/></td></tr><tr><td><input type="text" value="0"/> . <input type="text" value="0"/> . <input type="text" value="0"/> . <input type="text" value="0"/></td><td><input type="text" value="0"/></td></tr><tr><td><input type="text" value="0"/> . <input type="text" value="0"/> . <input type="text" value="0"/> . <input type="text" value="0"/></td><td><input type="text" value="0"/></td></tr></tbody></table>	IP	Port	<input type="text" value="0"/> . <input type="text" value="0"/> . <input type="text" value="0"/> . <input type="text" value="0"/>	<input type="text" value="0"/>	<input type="text" value="0"/> . <input type="text" value="0"/> . <input type="text" value="0"/> . <input type="text" value="0"/>	<input type="text" value="0"/>	<input type="text" value="0"/> . <input type="text" value="0"/> . <input type="text" value="0"/> . <input type="text" value="0"/>	<input type="text" value="0"/>	<input type="text" value="0"/> . <input type="text" value="0"/> . <input type="text" value="0"/> . <input type="text" value="0"/>	<input type="text" value="0"/>	<input type="text" value="0"/> . <input type="text" value="0"/> . <input type="text" value="0"/> . <input type="text" value="0"/>	<input type="text" value="0"/>	<input type="text" value="0"/> . <input type="text" value="0"/> . <input type="text" value="0"/> . <input type="text" value="0"/>	<input type="text" value="0"/>	<input type="text" value="0"/> . <input type="text" value="0"/> . <input type="text" value="0"/> . <input type="text" value="0"/>	<input type="text" value="0"/>	<input type="text" value="0"/> . <input type="text" value="0"/> . <input type="text" value="0"/> . <input type="text" value="0"/>	<input type="text" value="0"/>	<input type="text" value="0"/> . <input type="text" value="0"/> . <input type="text" value="0"/> . <input type="text" value="0"/>	<input type="text" value="0"/>
	IP	Port																			
	<input type="text" value="0"/> . <input type="text" value="0"/> . <input type="text" value="0"/> . <input type="text" value="0"/>	<input type="text" value="0"/>																			
	<input type="text" value="0"/> . <input type="text" value="0"/> . <input type="text" value="0"/> . <input type="text" value="0"/>	<input type="text" value="0"/>																			
	<input type="text" value="0"/> . <input type="text" value="0"/> . <input type="text" value="0"/> . <input type="text" value="0"/>	<input type="text" value="0"/>																			
	<input type="text" value="0"/> . <input type="text" value="0"/> . <input type="text" value="0"/> . <input type="text" value="0"/>	<input type="text" value="0"/>																			
	<input type="text" value="0"/> . <input type="text" value="0"/> . <input type="text" value="0"/> . <input type="text" value="0"/>	<input type="text" value="0"/>																			
	<input type="text" value="0"/> . <input type="text" value="0"/> . <input type="text" value="0"/> . <input type="text" value="0"/>	<input type="text" value="0"/>																			
	<input type="text" value="0"/> . <input type="text" value="0"/> . <input type="text" value="0"/> . <input type="text" value="0"/>	<input type="text" value="0"/>																			
	<input type="text" value="0"/> . <input type="text" value="0"/> . <input type="text" value="0"/> . <input type="text" value="0"/>	<input type="text" value="0"/>																			
<input type="text" value="0"/> . <input type="text" value="0"/> . <input type="text" value="0"/> . <input type="text" value="0"/>	<input type="text" value="0"/>																				

Update

Done Internet 100%

[Administrator](#)
[Setting](#)
[TCP Mode](#)
[UDP Mode](#)
[UART](#)
[Reset Device](#)

UART Control

Item	Setting
Mode	RS232
Baudrate	RS232
Character Bits	8
Parity Type	none
Stop Bit	1
Hardware Flow Control	none
Delimiter	<input type="checkbox"/> Character 1: 00, <input type="checkbox"/> Character 2: FF <input type="checkbox"/> Silent time: 5 (1~255)*200ms <input type="checkbox"/> Drop Character

Update

http://192.168.2.1/login.htm - Windows Internet Explorer

http://192.168.2.1/login.htm

File Edit View Favorites Tools Help

★ Favorites http://192.168.2.1/login.htm

[Administrator](#)
[Setting](#)
[TCP Mode](#)
[UDP Mode](#)
[UART](#)
[Reset Device](#)

UART Control

Item	Setting
Mode	RS232
Baudrate	57600
Character Bits	300 1200 2400 4800 9600 19200 38400
Parity Type	
Stop Bit	
Hardware Flow Control	<input type="checkbox"/> Character 1: 00, <input type="checkbox"/> Character 2: FF
Delimiter	<input type="checkbox"/> Silent time: 5 (1~255)*200ms <input type="checkbox"/> Drop Character

Update

Done Internet 100%

http://192.168.2.1/login.htm - Windows Internet Explorer

http://192.168.2.1/login.htm

File Edit View Favorites Tools Help

★ Favorites http://192.168.2.1/login.htm

[Administrator](#)
[Setting](#)
[TCP Mode](#)
[UDP Mode](#)
[UART](#)
[Reset Device](#)

UART Control

Item	Setting
Mode	RS232
Baudrate	57600
Character Bits	8
Parity Type	none
Stop Bit	1
Hardware Flow Control	none
Delimiter	<input type="checkbox"/> Character 1: 00, <input type="checkbox"/> Character 2: FF <input type="checkbox"/> Silent time: 5 (1~255)*200ms <input type="checkbox"/> Drop Character

Update

Internet 100%

http://192.168.2.1/login.htm - Windows Internet Explorer

http://192.168.2.1/login.htm

File Edit View Favorites Tools Help

★ Favorites http://192.168.2.1/login.htm

[Administrator](#)
[Setting](#)
[TCP Mode](#)
[UDP Mode](#)
[UART](#)
[Reset Device](#)

UART Control

Item	Setting
Mode	RS232
Baudrate	57600
Character Bits	8
Parity Type	none
Stop Bit	none
Hardware Flow Control	space mark
Delimiter	<input type="checkbox"/> Character 1: 00, <input type="checkbox"/> Character 2: FF <input type="checkbox"/> Silent time: 5 (1~255)*200ms <input type="checkbox"/> Drop Character

Update

Internet 100%

http://192.168.2.1/login.htm - Windows Internet Explorer

http://192.168.2.1/login.htm

File Edit View Favorites Tools Help

★ Favorites http://192.168.2.1/login.htm

[Administrator](#)
[Setting](#)
[TCP Mode](#)
[UDP Mode](#)
[UART](#)
[Reset Device](#)

UART Control

Item	Setting
Mode	RS232
Baudrate	57600
Character Bits	8
Parity Type	none
Stop Bit	1
Hardware Flow Control	1.5 or 2
Delimiter	<input type="checkbox"/> Character 1: 00, <input type="checkbox"/> Character 2: FF <input type="checkbox"/> Silent time: 5 (1~255)*200ms <input type="checkbox"/> Drop Character

Update

Internet 100%

[Administrator](#)
[Setting](#)
[TCP Mode](#)
[UDP Mode](#)
[UART](#)
[Reset Device](#)

UART Control

Item	Setting
Mode	RS232
Baudrate	57600
Character Bits	8
Parity Type	none
Stop Bit	1
Hardware Flow Control	none
Delimiter	<input type="checkbox"/> Character 1: 00 <input type="checkbox"/> Character 2: FF
	<input type="checkbox"/> Silent time: 5 (1~255)*200ms
	<input type="checkbox"/> Drop Character

Update

