

How to test the BLE232V2 and USBLE232C Serial Bluetooth Smart® Low Energy Adapter

(Tested with Samsung Galaxy S8 Android and Windows 10)

This guide describes how to connect one of our Serial Bluetooth Smart® Low Energy Adapters (part BLE232V2 or USBLE232C) with an Android device and how to send and receive data to/from a PC. **The procedure is very similar with iOS.** The setup looks like this:



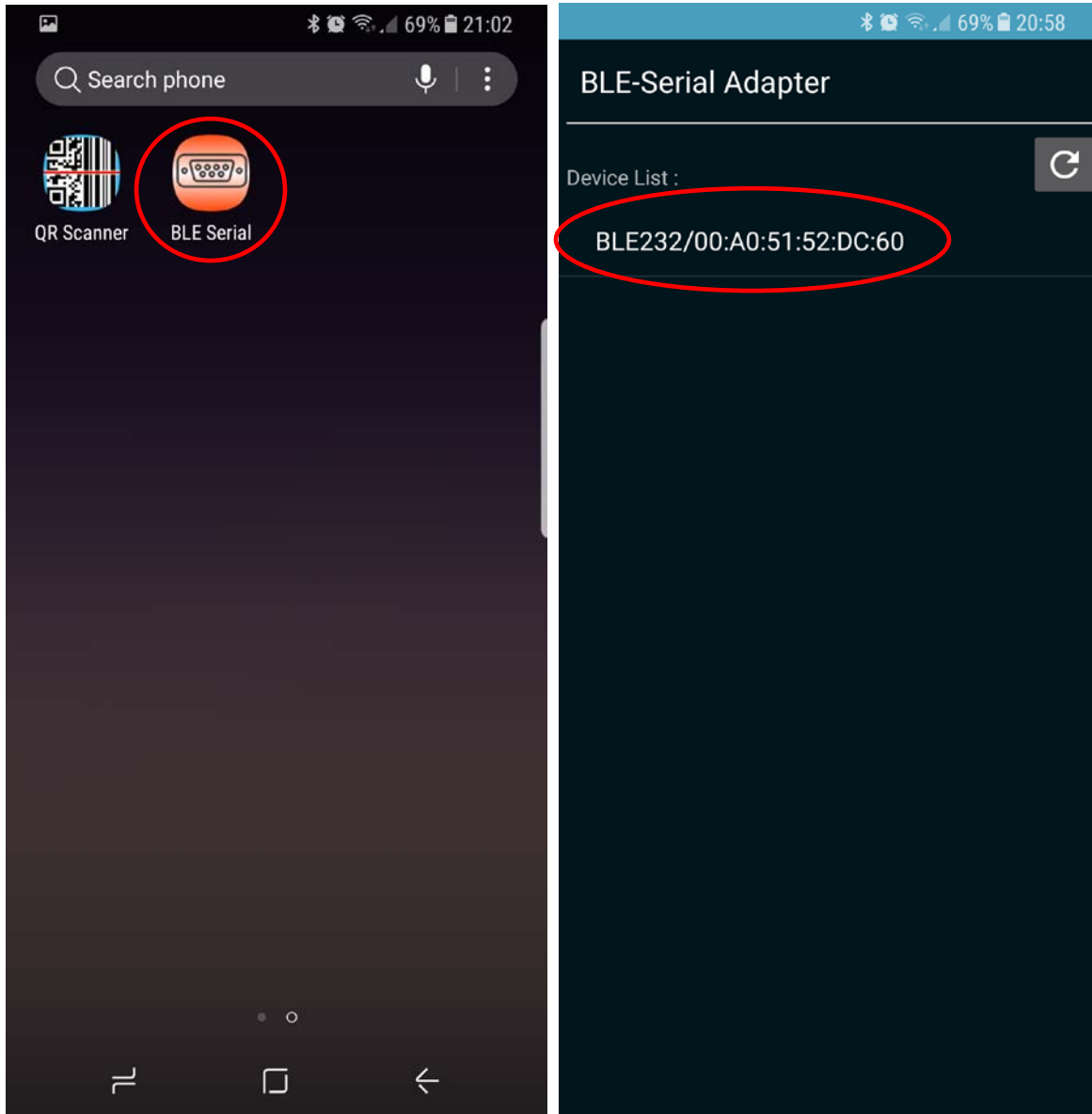
First download the app called “BLE Serial” to be able to communicate with the Serial Bluetooth Adapter. You can download it from the Google Play Store:

<https://play.google.com/store/apps/details?id=tw.com.uconnect.ble232>

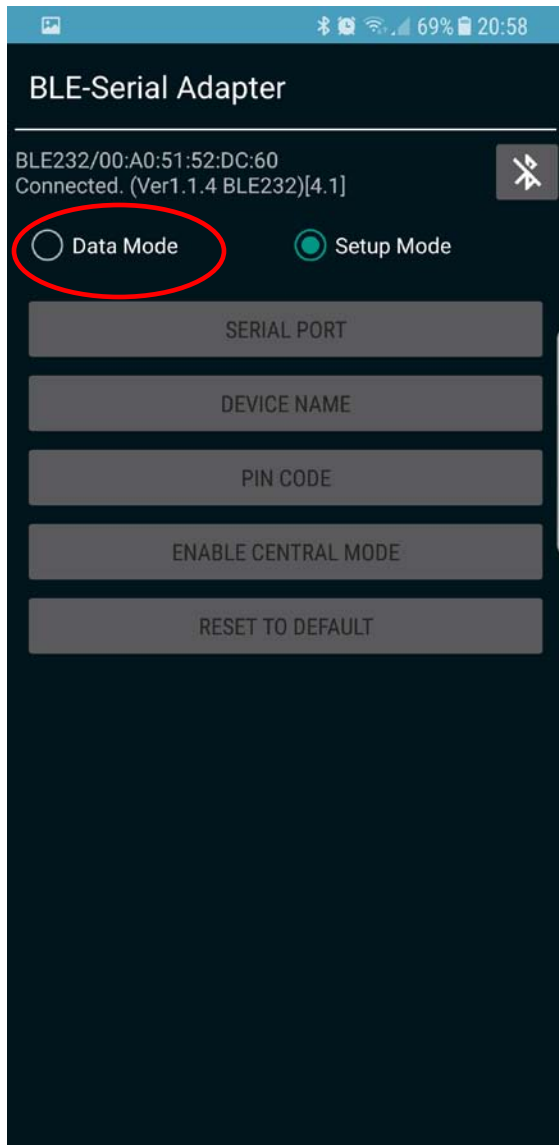
or scan the QR code below:



Now start the app on your Android. Tap on the adapter in the "Device List" once the app has found it. The adapter should now pair with the Android.

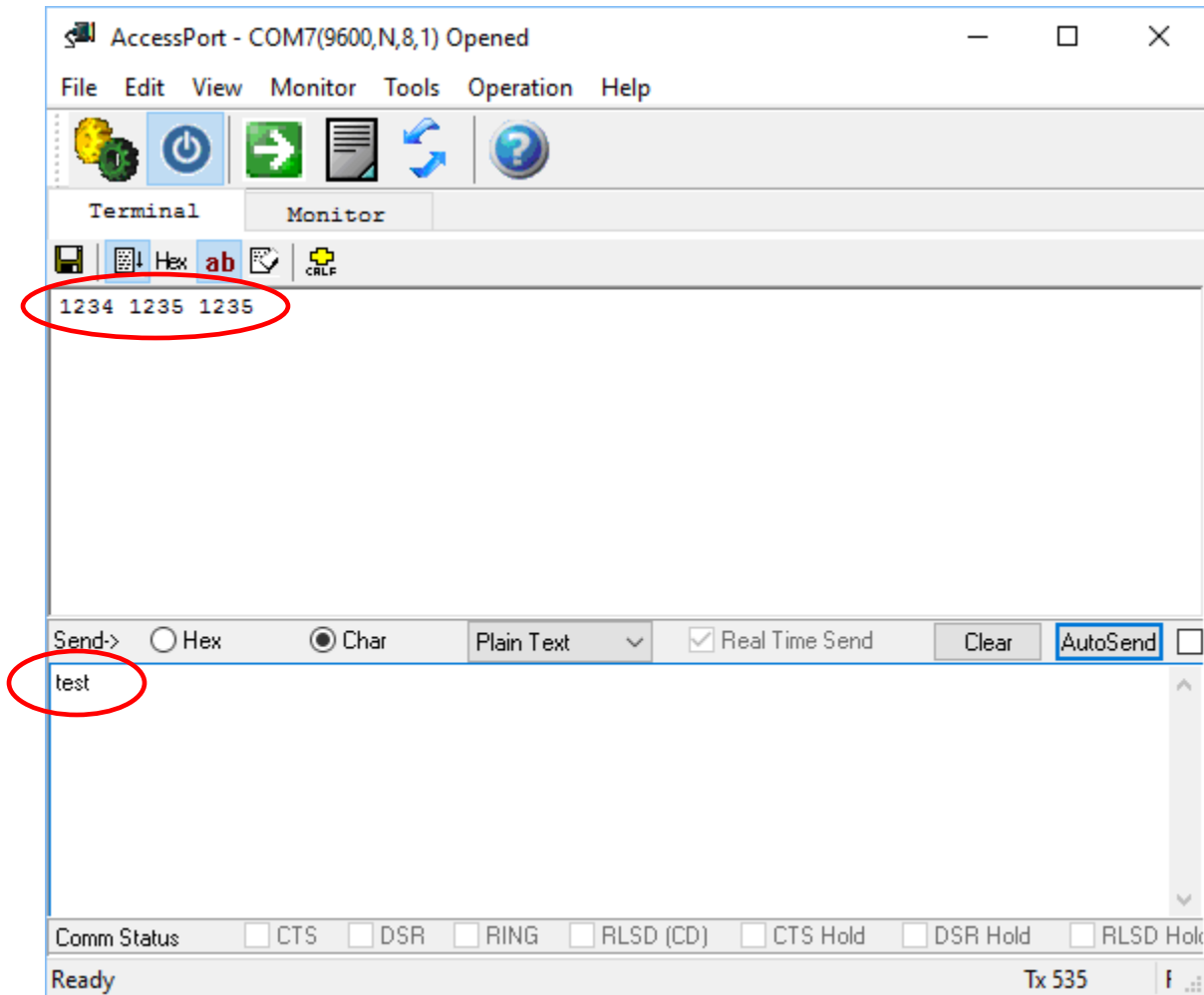


Once the adapter is paired with the Android, select "Data Mode".



Connect the serial RS232 end of the adapter to your computer's serial port (or use a USB to serial adapter if your computer does not have a serial port).

Download the terminal program 'AccessPort' from usconverters.com and open the program. Select the COM port the adapter is connected to and select 9600bps, N, 8, 1 which are the adapter's default settings. Then open the COM port:



FAQ

Q: It seems like the payload is only 20 bytes, Bluetooth 4.2 has a 250 bytes payload, why?

A: Make sure your device has Bluetooth 4.2. However, not all Bluetooth 4.2 devices support the 250 bytes MTU, Maximum Transmission Unit.

Here is a discussion about MTU limit of 20 bytes on some Android devices:

<https://github.com/don/cordova-plugin-ble-central/issues/234>

