

■ System Requirements

- Support OS : Windows XP / Windows Vista / Windows 7
- Please make sure the **Microsoft NET Framework 2.0 or later version** had been installed before Null-modem emulator be installed.

■ Install Software

1. Select folder “**com0com_v2.2.2.0**”



2. Select folder “ **Windows**”

Please read the **installation** before software is installed.

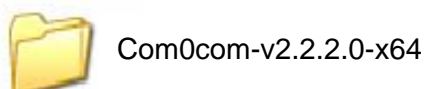


Com0com_installation
_v2.2.2.0.120320

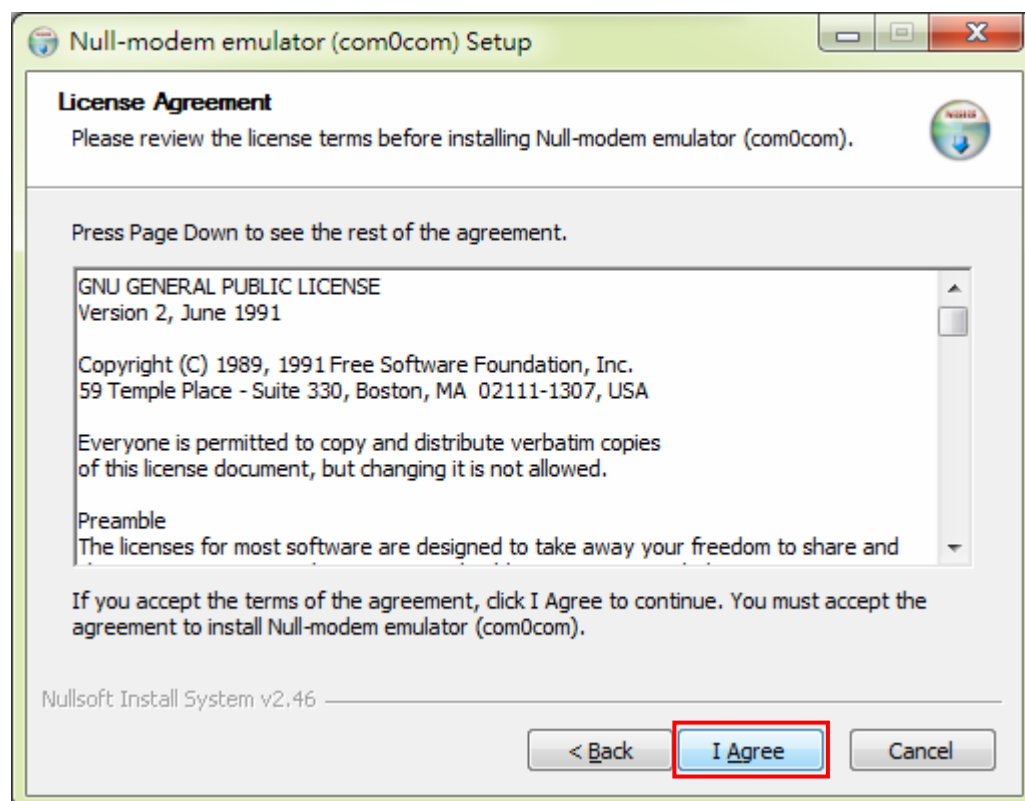
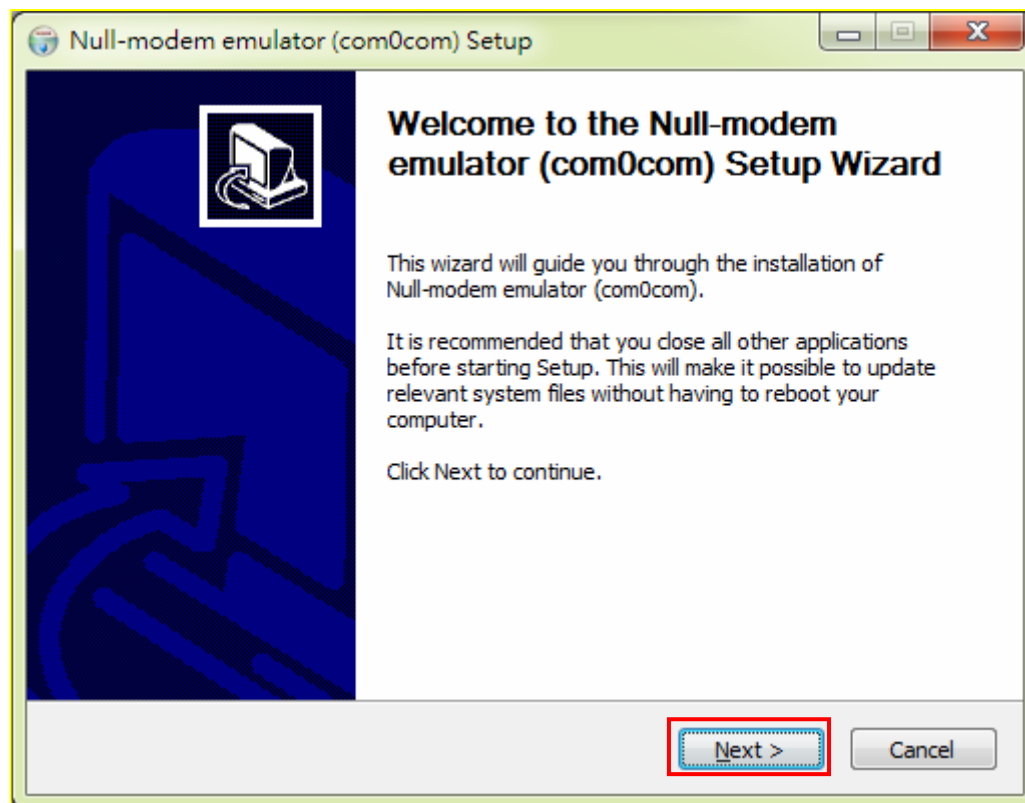
3. Windows XP, Vista, 7 (**32-Bit**) , please select “**com0com-v2.2.2.0-x32**”

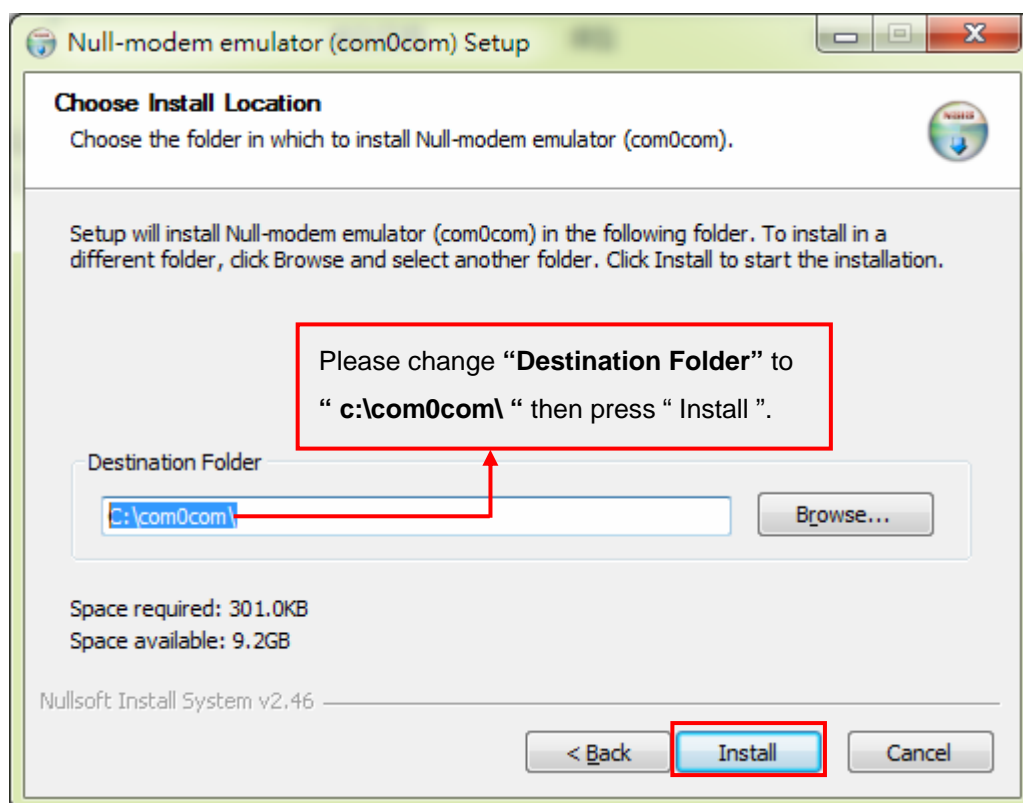
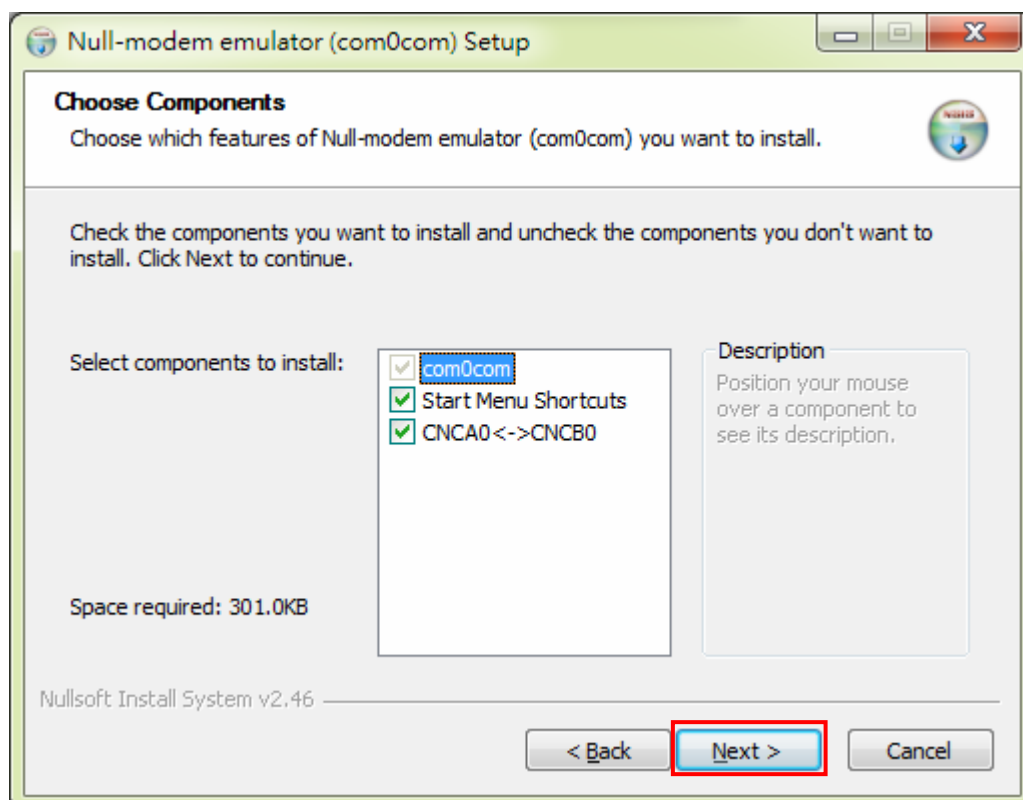


Windows XP, Vista, 7 (**64-Bit**) , please select “**com0com-v2.2.2.0-x64**”



4. Install com0com-2.2.2.0





The Found New Hardware Wizard dialog box will appear when software installing twice,

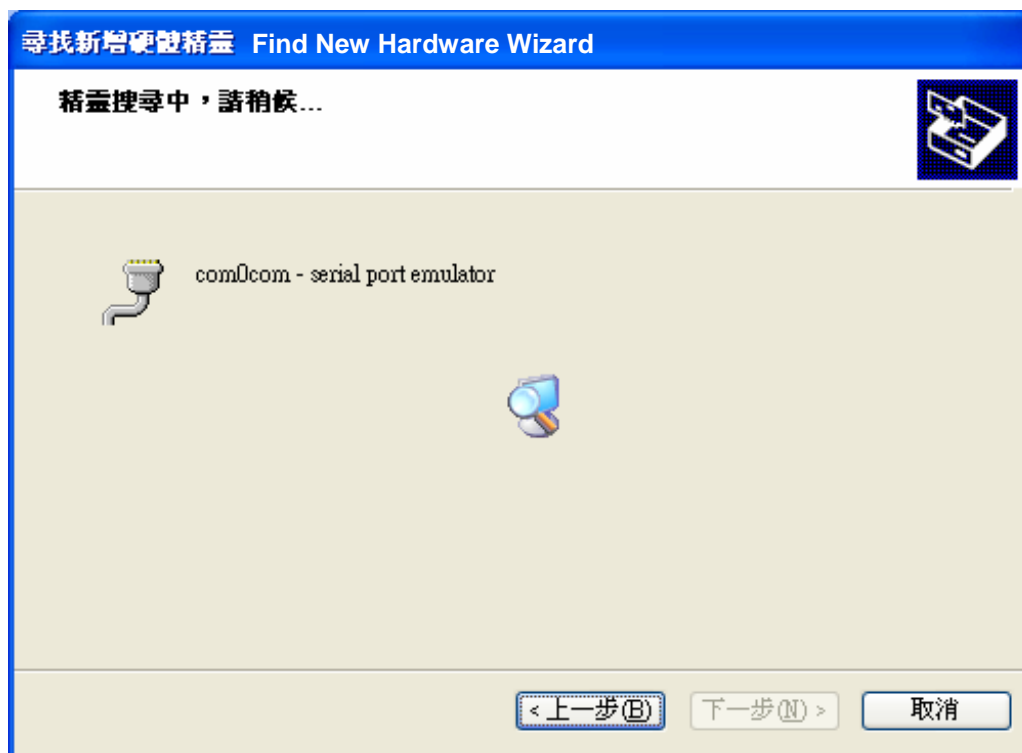
- Please select “Yes, this time only” then press “Next”



- Please select “Install the software automatically (Recommended)” then press “Next”



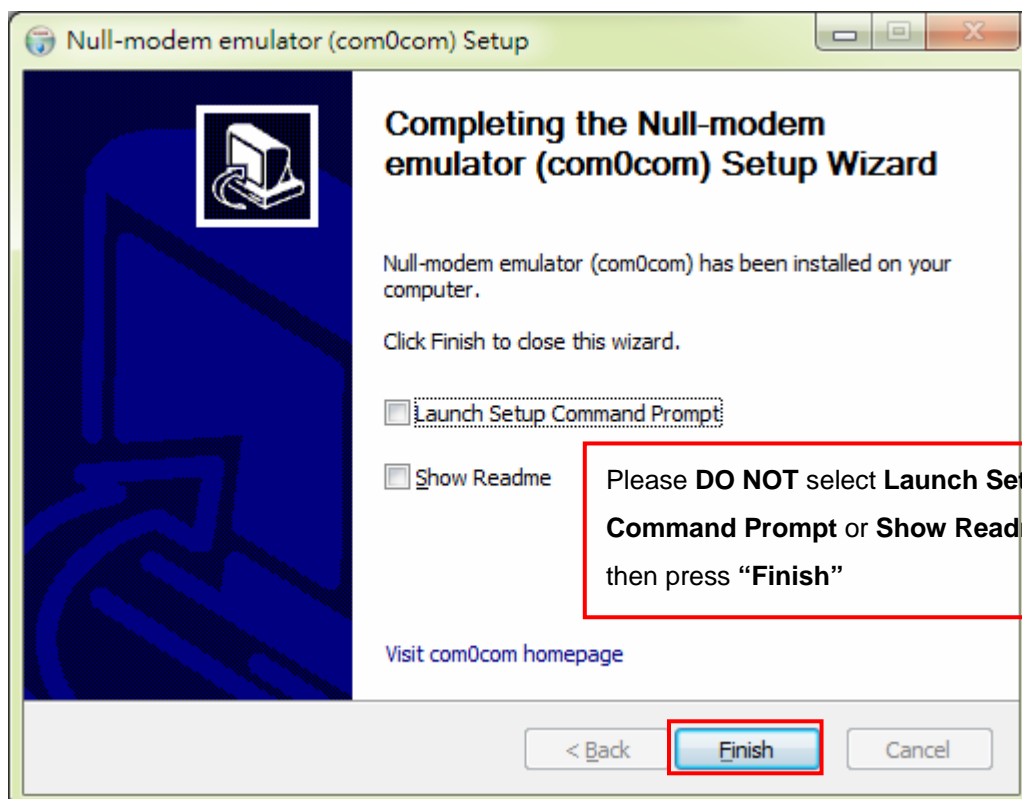
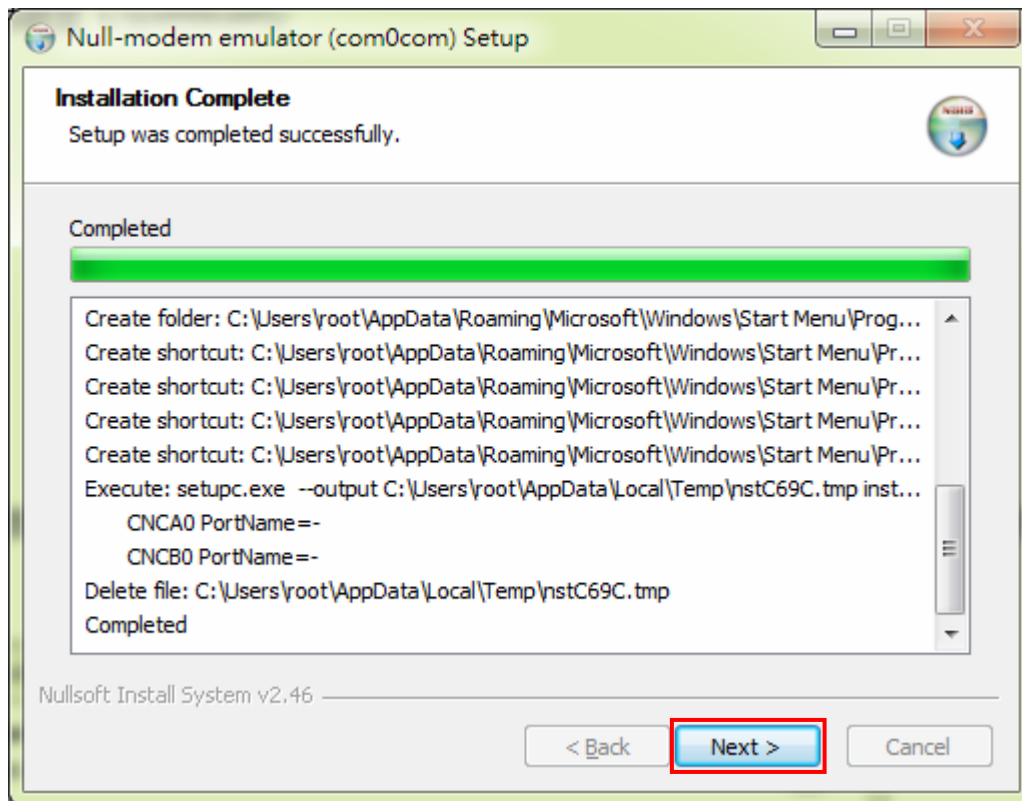
- The Found New Hardware Wizard is searching.



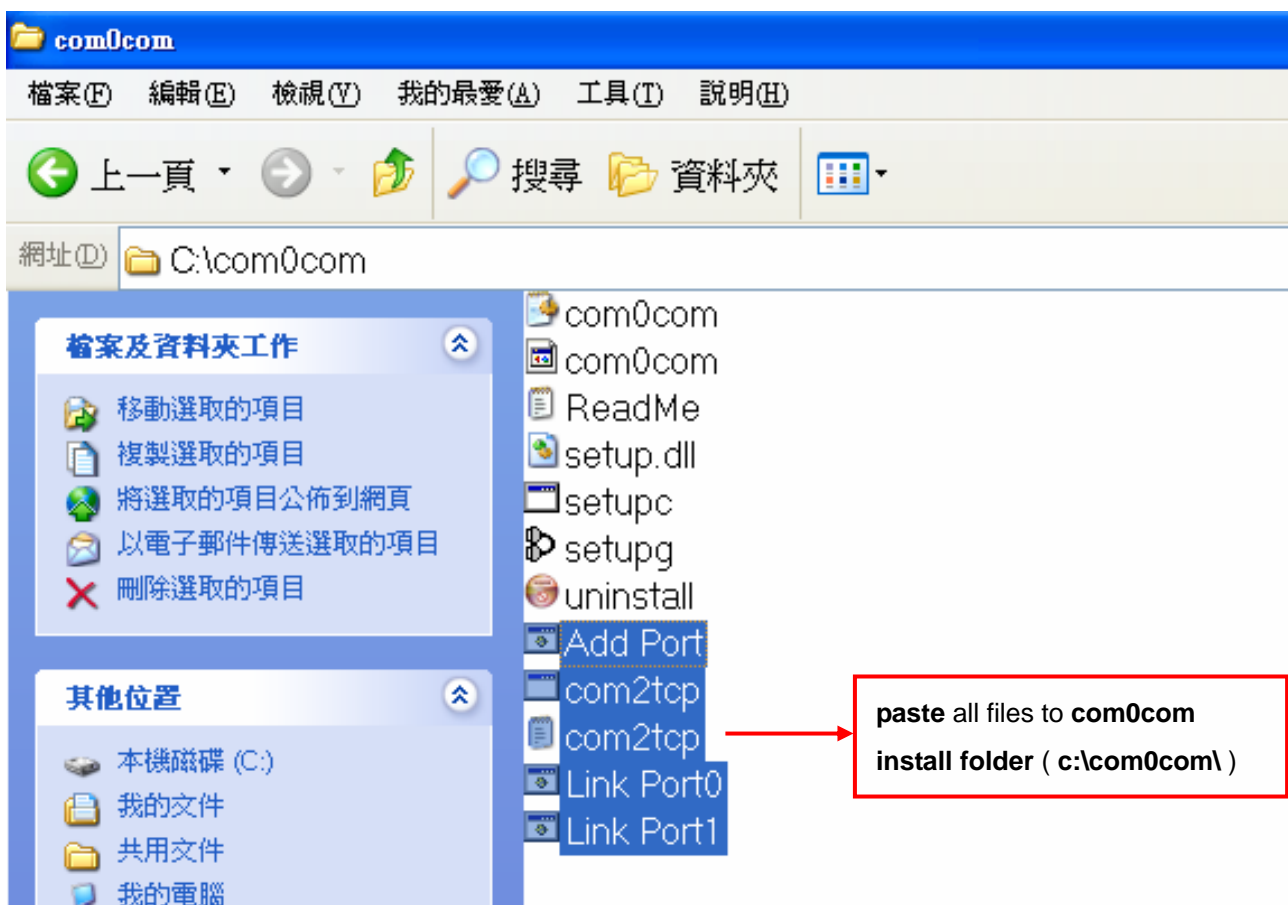
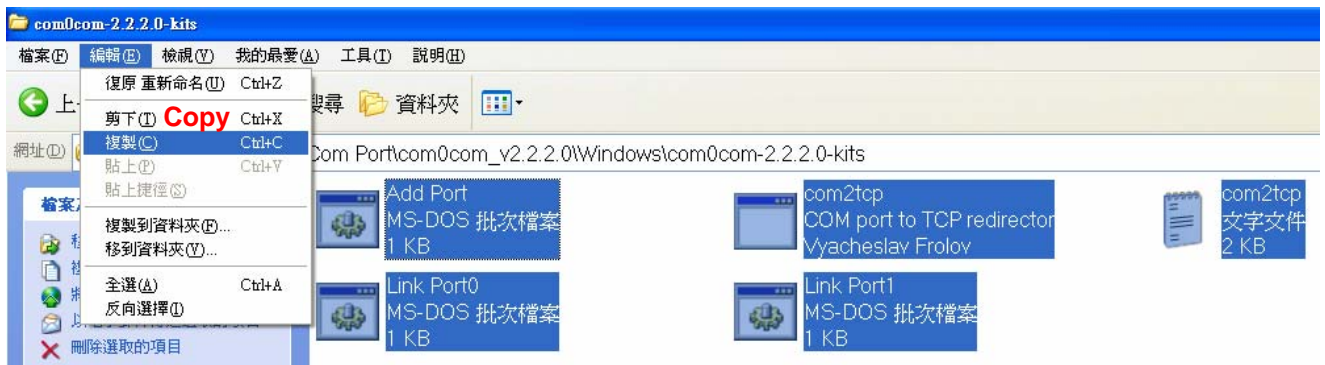
- The Found New Hardware Wizard has finished installing software, please select “Finish”



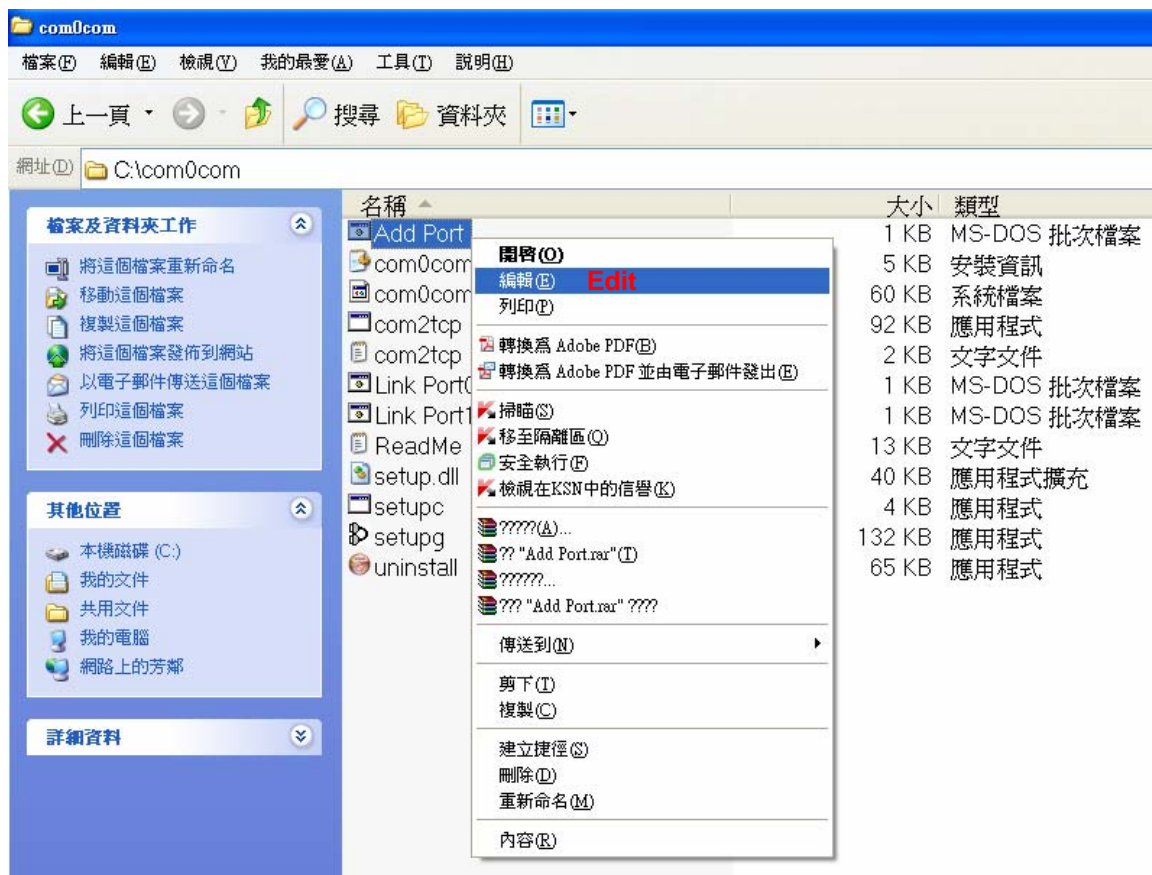
- When file had been installed completed, please press “ **Next** ”



5. Select folder “Com0com-v2.2.2.0-kits”

6. Select **all files** then “Copy” and “Paste” to install folder **com0com** (c:\com0com\)

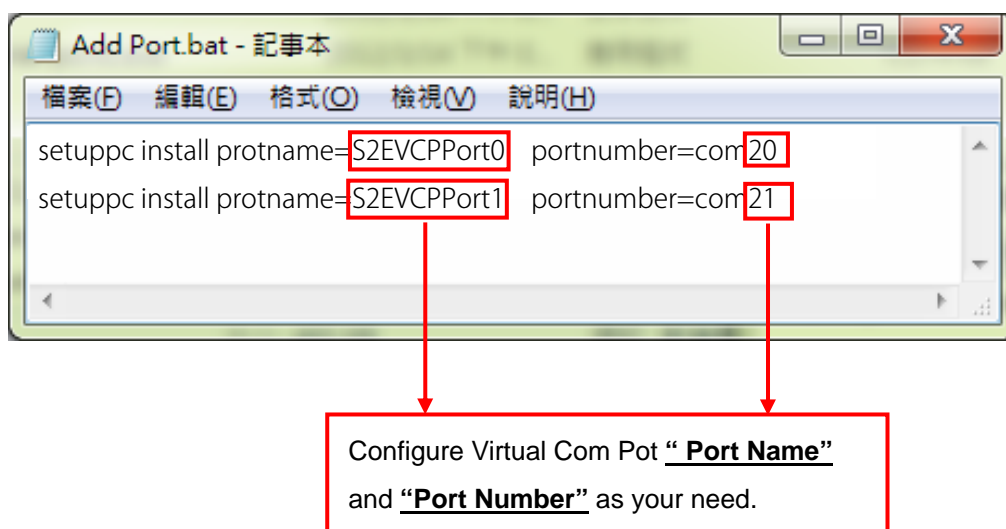
7. Select **"Add Port.bat"** then click the right button of mouse to **"Edit"**



8. Configure the Virtual Com Port **"Name"** and **"Port Number"** as your need

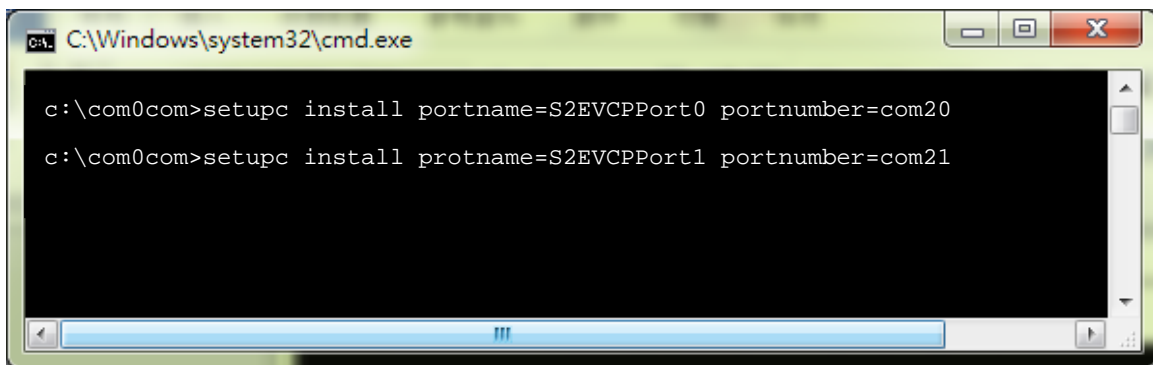
Default : Port Name = S2EVCPPort 0 , Port Number = COM20

Port Name = S2EVCPPort 1 , Port Number = COM21



※ Please close the dialog box after configuration finished.

9. Run the program “Add Port.bat”



```
c:\com0com>setupc install portname=S2EVCPPort0 portnumber=com20
c:\com0com>setupc install portname=S2EVCPPort1 portnumber=com21
```

The configuration is success when you see the dialog box as above.

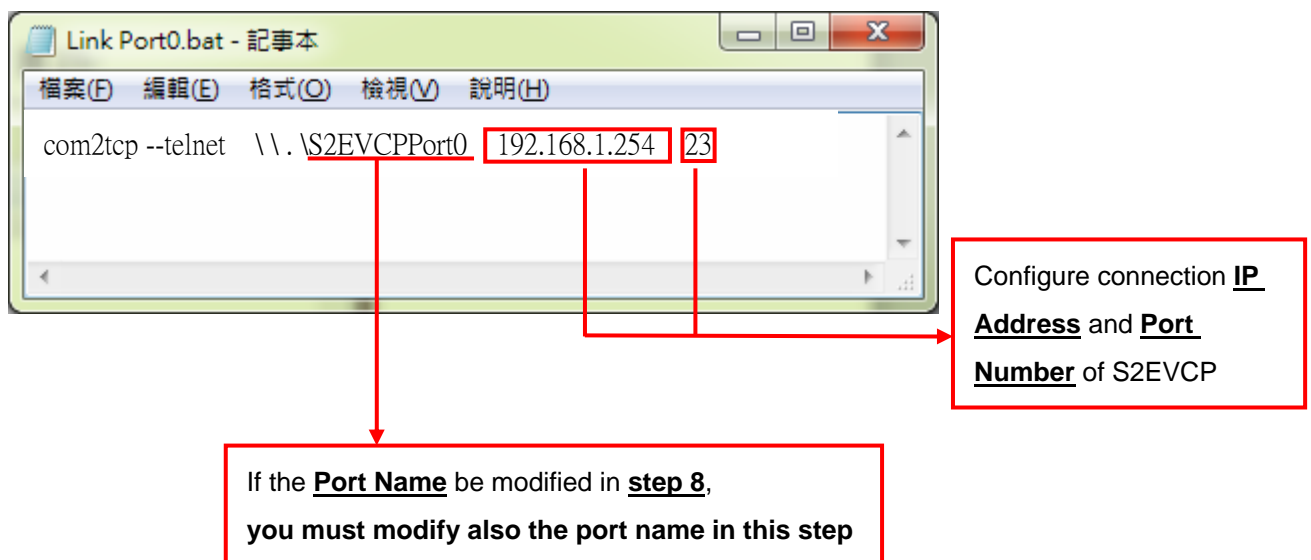
※ **S2EVCP Port 0 = COM 20 (Default) or new port name and number as your configured.**

S2EVCP Port 1 = COM 21 (Default) or new port name and number as your configured.

10. Select “Link Port0.bat” then click the left button of mouse to “Edit”

Configure the com port IP address and Port Number of be contacted device

※ **Default - S2EVCP Port 0 : IP = 192.168.1.254 / Port Number =23**



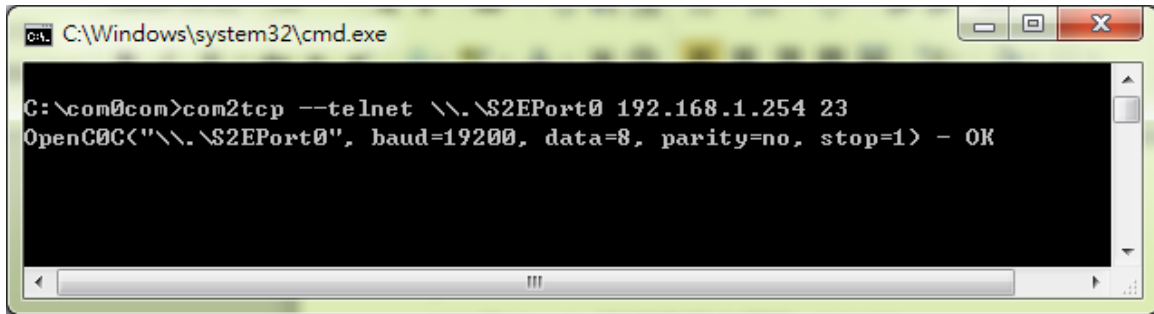
com2tcp --telnet \\.\S2EVCPPort0 192.168.1.254 23

If the Port Name be modified in step 8, you must modify also the port name in this step

Configure connection IP Address and Port Number of S2EVCP

※ **Please close the dialog box after configuration finished.**

11. Run the program “Link Port0.bat”



The configuration is success when you see the dialog box as above.

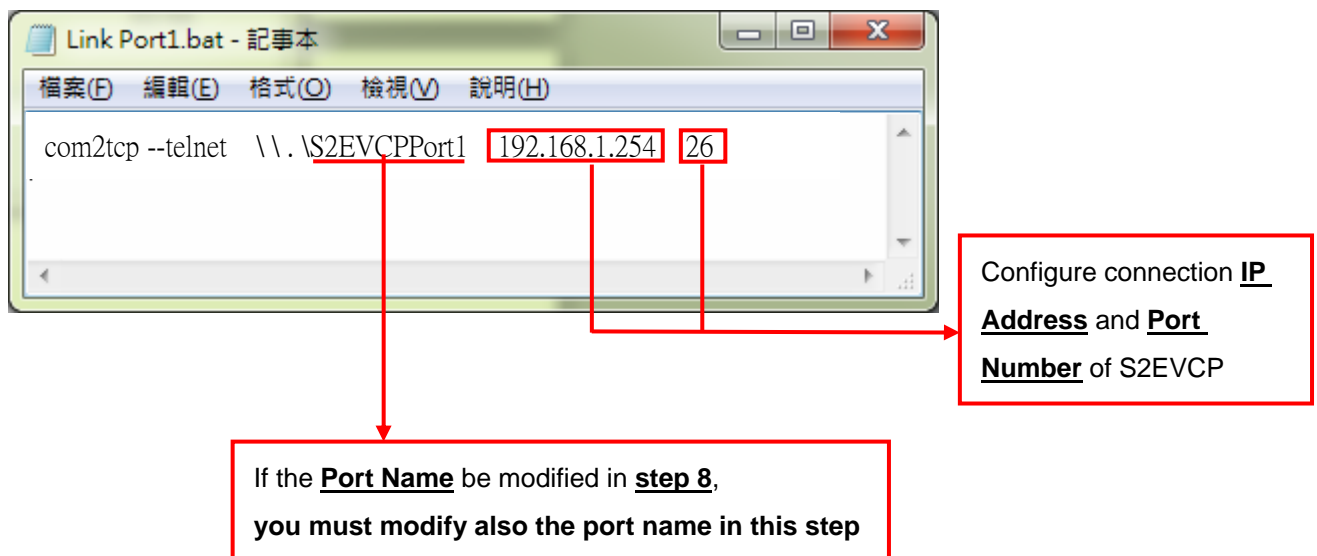
The S2EVCP Port 0 had been connected to 192.168.1.254 / COM23

※ Please minimize the dialog box , **DO NOT** close it.

12. Select “Link Port1.bat” then click the left button of mouse to “Edit”

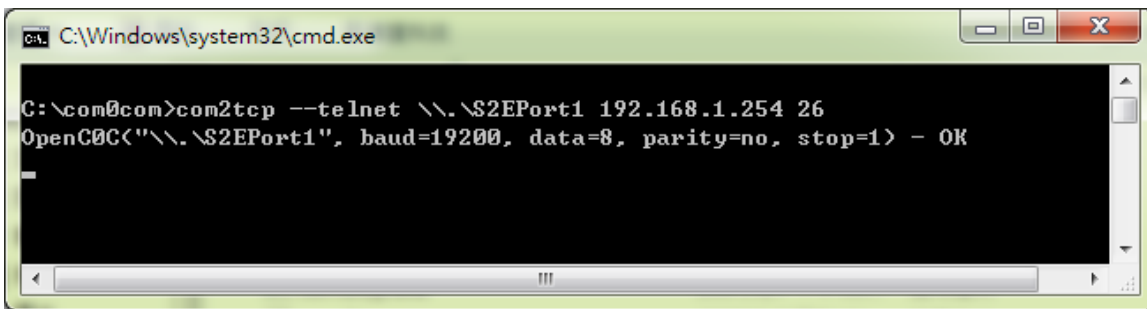
Configure the com port IP address and Port Number of be contacted device

※ **Default - S2EVCP Port 1 : IP = 192.168.1.254 / Port Number =26**



※ Please close the dialog box after configuration finished.

13. Run the program “Link Port0.bat”



The configuration is success when you see the dialog box as above.

The S2EVC Port 1 had been connected to 192.168.1.254 / COM26

※ Please minimize the dialog box , **DO NOT** close it.

14. Setup finish.

From next time, you just need to Run the program “Link Port0.bat” and Link Port1.bat” or create a shortcut in startup area then the program will auto-run when you re-start computer.

