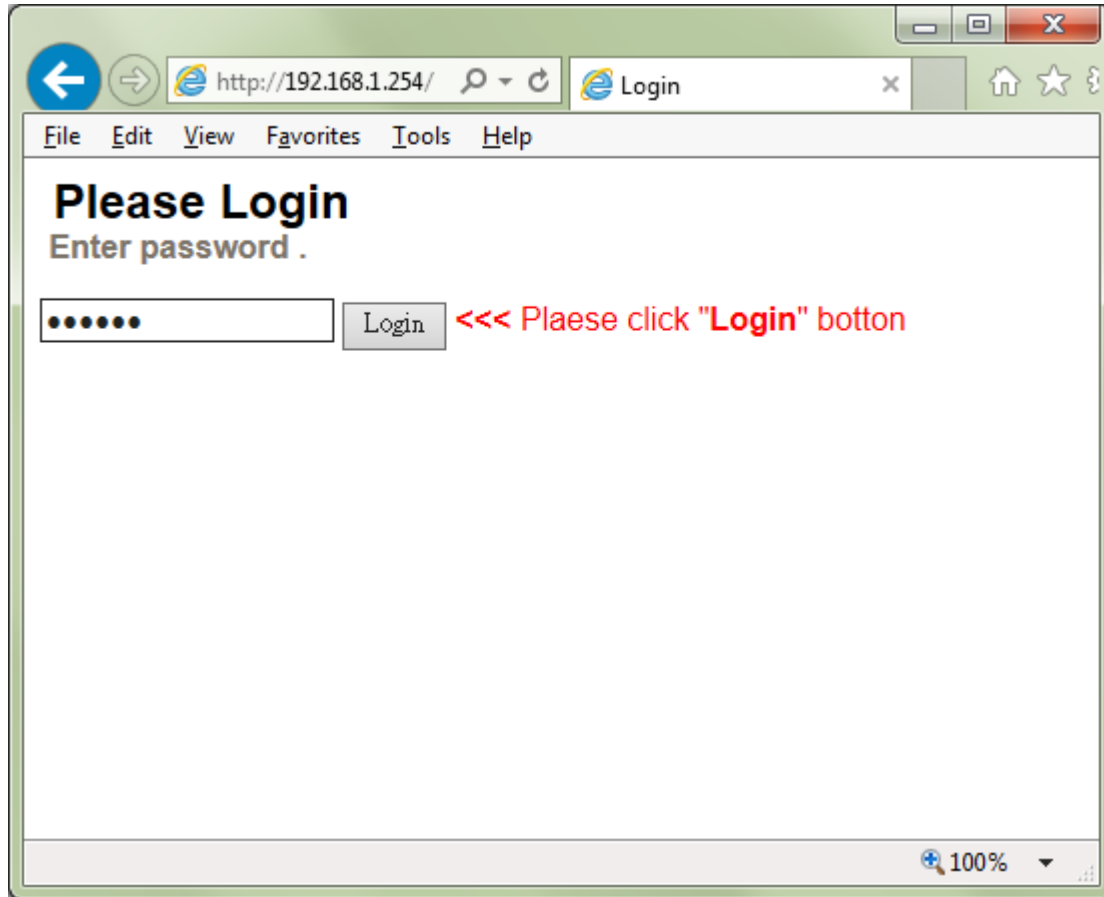


HLSE02P Web Configuration Default settings



Default password: 123456

Serial To Ethernet Converter

Home

Port 0 Settings

Port 1 Settings

System Settings

Current port settings:

| | Port 0 | Port 1 |
|----------------------------|--------------------|--------------------|
| Baud Rate: | 115200 bits/second | 115200 bits/second |
| Data Size: | 8 bits/character | 8 bits/character |
| Parity: | None | None |
| Stop Bits: | 1 bit(s) | 1 bit(s) |
| Flow Control: | None | None |
| Local Telnet Port Number: | 23 | 26 |
| Remote Telnet Port Number: | N/A | N/A |
| Telnet Mode: | Server | Server |
| Telnet Protocol: | Telnet | Telnet |
| Telnet Server IP: | N/A | N/A |
| Telnet Timeout: | 0 seconds | 0 seconds |

Serial To Ethernet Module P... x

http://192.168.1.254/col

File Edit View Favorites Tools Help

RS-232 Port 0 Settings

Home

Port 0 Settings

Port 1 Settings

System Settings

| Port 0 Settings | Current | Updated |
|----------------------------|-------------------|---|
| Baud Rate: | 115200bits/second | 115200 <input type="text"/> bits/S |
| Data Size: | 8 bits/character | 8 <input type="text"/> bits/character |
| Parity: | None | None <input type="text"/> |
| Stop Bits: | 1bit(s) | 1 <input type="text"/> bit(s) |
| Flow Control: | None | None <input type="text"/> |
| Local Telnet Port Number: | 23 | <input type="text" value="23"/> |
| Remote Telnet Port Number: | N/A | <input type="text" value="23"/> |
| Telnet Mode: | Server | Server <input type="text"/> |
| Telnet Protocol: | Telnet | Telnet <input type="text"/> |
| Telnet Server IP: | N/A | <input type="text" value="0"/> . <input type="text" value="0"/> . <input type="text" value="0"/> . <input type="text" value="0"/> |
| Telnet Timeout: | 0seconds | <input type="text" value="0"/> seconds (0 for no timeout) |

Make these the default settings.

100%

Serial To Ethernet Module P... x

http://192.168.1.254/col

File Edit View Favorites Tools Help

RS-232 Port 0 Settings

[Home](#)

Port 0 Settings

[Port 1 Settings](#)

[System Settings](#)

| Port 0 Settings | Current | Updated |
|----------------------------|-------------------|---|
| Baud Rate: | 115200bits/second | 230400 115200 bits/S |
| Data Size: | 8 bits/character | 57600 38400 character |
| Parity: | None | 19200 |
| Stop Bits: | 1bit(s) | 14400 9600 (s) |
| Flow Control: | None | 4800 2400 ✓ |
| Local Telnet Port Number: | 23 | 1200 |
| Remote Telnet Port Number: | N/A | 600 |
| Telnet Mode: | Server | 300 110 |
| Telnet Protocol: | Telnet | Server ▾ |
| Telnet Server IP: | N/A | Telnet ▾ |
| Telnet Timeout: | 0seconds | 0 . 0 . 0 . 0 0 seconds (0 for no timeout) |

Make these the default settings.

100%

Serial To Ethernet Module P... x

http://192.168.1.254/col

File Edit View Favorites Tools Help

RS-232 Port 0 Settings

Home

Port 0 Settings

Port 1 Settings

System Settings

| Port 0 Settings | Current | Proposed |
|----------------------------|-------------------|------------------------------|
| Baud Rate: | 115200bits/second | 5 bits/S |
| Data Size: | 8 bits/character | 6 bits/character |
| Parity: | None | None |
| Stop Bits: | 1bit(s) | 1 bit(s) |
| Flow Control: | None | None |
| Local Telnet Port Number: | 23 | 23 |
| Remote Telnet Port Number: | N/A | 23 |
| Telnet Mode: | Server | Server |
| Telnet Protocol: | Telnet | Telnet |
| Telnet Server IP: | N/A | 0 . 0 . 0 . 0 |
| Telnet Timeout: | 0seconds | 0 seconds (0 for no timeout) |

Make these the default settings.

100%

Serial To Ethernet Module P... x

http://192.168.1.254/col

File Edit View Favorites Tools Help

RS-232 Port 0 Settings

Home

Port 0 Settings

Port 1 Settings

System Settings

| Port 0 Settings | Current | Updated |
|----------------------------|-------------------|--|
| Baud Rate: | 115200bits/second | 115200 bits/S |
| Data Size: | 8 bits/character | 8 bits/character |
| Parity: | None | <div style="border: 1px solid black; padding: 2px;"> None Odd Even Mark Space </div> |
| Stop Bits: | 1bit(s) | 1(s) |
| Flow Control: | None | None |
| Local Telnet Port Number: | 23 | 23 |
| Remote Telnet Port Number: | N/A | 23 |
| Telnet Mode: | Server | Server |
| Telnet Protocol: | Telnet | Telnet |
| Telnet Server IP: | N/A | 0 . 0 . 0 . 0 |
| Telnet Timeout: | 0seconds | 0 seconds (0 for no timeout) |

Make these the default settings.

100%

Serial To Ethernet Module P... x

http://192.168.1.254/col

File Edit View Favorites Tools Help

RS-232 Port 0 Settings

Home

Port 0 Settings

Port 1 Settings

System Settings

| Port 0 Settings | Current | Updated |
|----------------------------|-------------------|---|
| Baud Rate: | 115200bits/second | 115200 <input type="text"/> bits/S |
| Data Size: | 8 bits/character | 8 <input type="text"/> bits/character |
| Parity: | None | None <input type="text"/> |
| Stop Bits: | 1bit(s) | 1 <input type="text"/> bit(s) |
| Flow Control: | None | <input type="text"/> |
| Local Telnet Port Number: | 23 | <input type="text" value="23"/> |
| Remote Telnet Port Number: | N/A | <input type="text" value="23"/> |
| Telnet Mode: | Server | Server <input type="text"/> |
| Telnet Protocol: | Telnet | Telnet <input type="text"/> |
| Telnet Server IP: | N/A | <input type="text" value="0"/> . <input type="text" value="0"/> . <input type="text" value="0"/> . <input type="text" value="0"/> |
| Telnet Timeout: | 0seconds | <input type="text" value="0"/> seconds (0 for no timeout) |

Make these the default settings.

100%

Serial To Ethernet Module P... x

http://192.168.1.254/col

File Edit View Favorites Tools Help

RS-232 Port 0 Settings

Home

Port 0 Settings

Port 1 Settings

System Settings

| Port 0 Settings | Current | Updated |
|----------------------------|-------------------|---|
| Baud Rate: | 115200bits/second | 115200 <input type="text"/> bits/S |
| Data Size: | 8 bits/character | 8 <input type="text"/> bits/character |
| Parity: | None | None <input type="text"/> |
| Stop Bits: | 1bit(s) | 1 <input type="text"/> bit(s) |
| Flow Control: | None | <div style="border: 1px solid black; padding: 2px;"> None Hardware </div> |
| Local Telnet Port Number: | 23 | <input type="text" value="23"/> |
| Remote Telnet Port Number: | N/A | <input type="text" value="23"/> |
| Telnet Mode: | Server | Server <input type="text"/> |
| Telnet Protocol: | Telnet | Telnet <input type="text"/> |
| Telnet Server IP: | N/A | <input type="text" value="0"/> . <input type="text" value="0"/> . <input type="text" value="0"/> . <input type="text" value="0"/> |
| Telnet Timeout: | 0seconds | <input type="text" value="0"/> seconds (0 for no timeout) |

Make these the default settings.

100%

Serial To Ethernet Module P... x

http://192.168.1.254/col

File Edit View Favorites Tools Help

RS-232 Port 0 Settings

Home

Port 0 Settings

Port 1 Settings

System Settings

| Port 0 Settings | Current | Updated |
|----------------------------|-------------------|------------------------------|
| Baud Rate: | 115200bits/second | 115200 bits/S |
| Data Size: | 8 bits/character | 8 bits/character |
| Parity: | None | None |
| Stop Bits: | 1bit(s) | 1 bit(s) |
| Flow Control: | None | None |
| Local Telnet Port Number: | 23 | 23 |
| Remote Telnet Port Number: | N/A | 23 |
| Telnet Mode: | Server | Server Client telnet |
| Telnet Protocol: | Telnet | |
| Telnet Server IP: | N/A | 0 . 0 . 0 . 0 |
| Telnet Timeout: | 0seconds | 0 seconds (0 for no timeout) |

Make these the default settings.

100%

Serial To Ethernet Module P... x

File Edit View Favorites Tools Help

RS-232 Port 0 Settings

Home

Port 0 Settings

Port 1 Settings

System Settings

| Port 0 Settings | Current | Updated |
|----------------------------|-------------------|------------------------------|
| Baud Rate: | 115200bits/second | 115200 bits/S |
| Data Size: | 8 bits/character | 8 bits/character |
| Parity: | None | None |
| Stop Bits: | 1bit(s) | 1 bit(s) |
| Flow Control: | None | None |
| Local Telnet Port Number: | 23 | 23 |
| Remote Telnet Port Number: | N/A | 23 |
| Telnet Mode: | Server | Server |
| Telnet Protocol: | Telnet | Telnet Raw |
| Telnet Server IP: | N/A | 0 . 0 . 0 . 0 |
| Telnet Timeout: | 0seconds | 0 seconds (0 for no timeout) |

Make these the default settings.

100%

Serial To Ethernet Module P... x

File Edit View Favorites Tools Help

RS-232 Port 1 Settings

[Home](#)

[Port 0 Settings](#)

Port 1 Settings

[System Settings](#)

| Port 1 Settings | Current | Updated |
|----------------------------|--------------------|---|
| Baud Rate: | 115200 bits/second | 115200 <input type="text" value="v"/> bits/S |
| Data Size: | 8bits/character | 8 <input type="text" value="v"/> bit(s) |
| Parity: | None | None <input type="text" value="v"/> |
| Stop Bits: | 1bit(s) | 1 <input type="text" value="v"/> bit(s) |
| Flow Control: | None | None <input type="text" value="v"/> |
| Local Telnet Port Number: | 26 | <input type="text" value="26"/> |
| Remote Telnet Port Number: | N/A | <input type="text" value="23"/> |
| Telnet Mode: | Server | Server <input type="text" value="v"/> |
| Telnet Protocol: | Telnet | Telnet <input type="text" value="v"/> |
| Telnet Server IP: | N/A | <input type="text" value="0"/> . <input type="text" value="0"/> . <input type="text" value="0"/> . <input type="text" value="0"/> |
| Telnet Timeout: | 0seconds | <input type="text" value="0"/> seconds (0 for no timeout) |

Make these the default settings.

100%

System Settings

Home

Port 0 Settings

Port 1 Settings

System Settings

IP Address Selection

| | |
|--------------------|---------------------|
| Address Type: | Static IP |
| Static IP Address: | 192 . 168 . 1 . 254 |
| Subnet Mask: | 255 . 255 . 255 . 0 |
| Default Gateway: | 0 . 0 . 0 . 0 |
| Update Settings | |

Http Port Settings

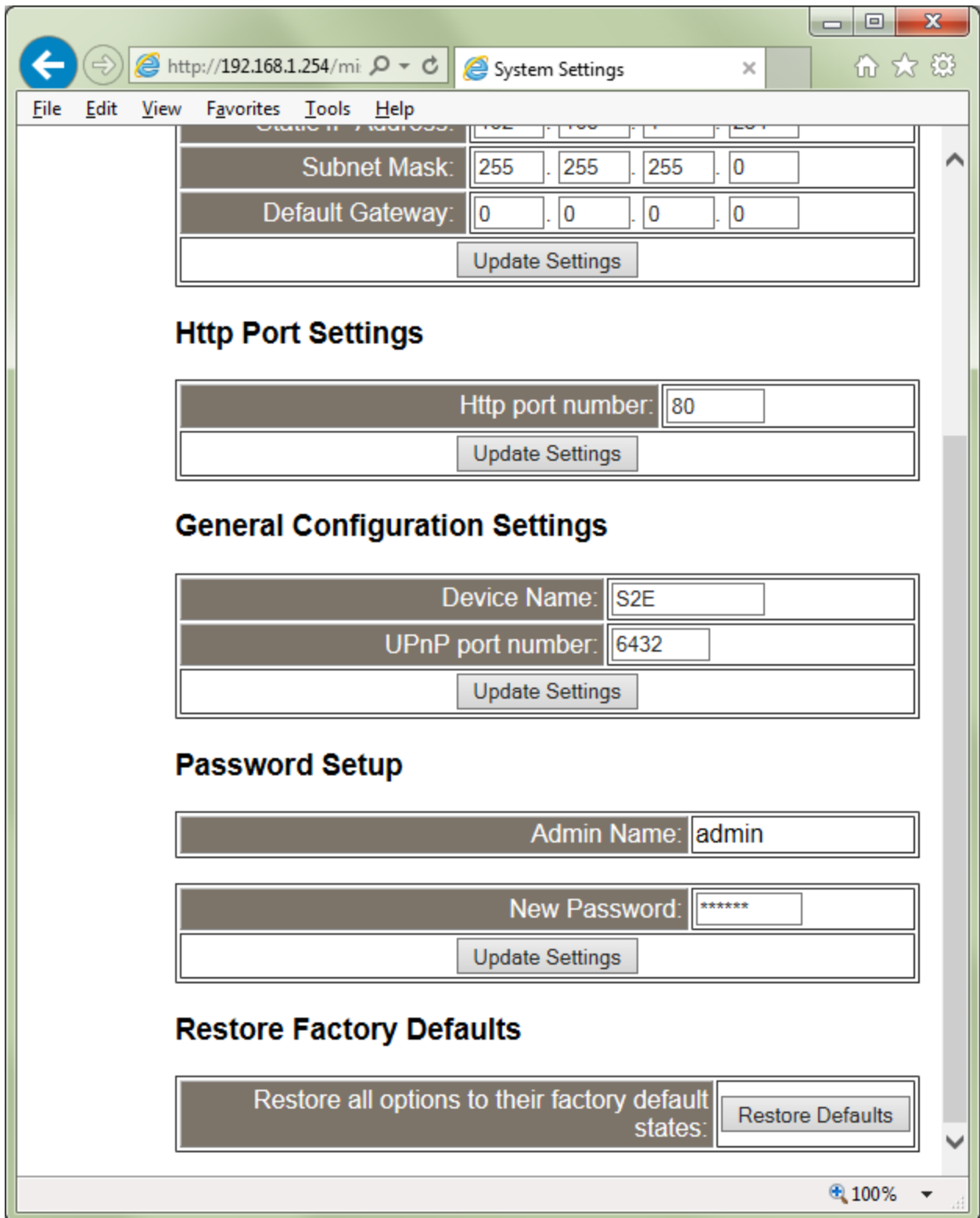
| | |
|-------------------|----|
| Http port number: | 80 |
| Update Settings | |

General Configuration Settings

| | |
|-------------------|------|
| Device Name: | S2E |
| UPnP port number: | 6432 |
| Update Settings | |

Password Setup

100%



System Settings

Home

Port 0 Settings

Port 1 Settings

System Settings

Device Name: S2E

IP Address: 192.168.1.254

MAC Address: 00-1a-ff-01-04-32

IP Address Selection

Address Type: DHCP/AutoIP
Static IP

Static IP Address: 192 . 168 . 1 . 254

Subnet Mask: 255 . 255 . 255 . 0

Default Gateway: 0 . 0 . 0 . 0

Update Settings

Http Port Settings

Http port number: 80

Update Settings

General Configuration Settings

Device Name: S2E

UPnP port number: 6432

Update Settings

Password Setup

Admin Name: admin

New Password: *****

Update Settings

100%