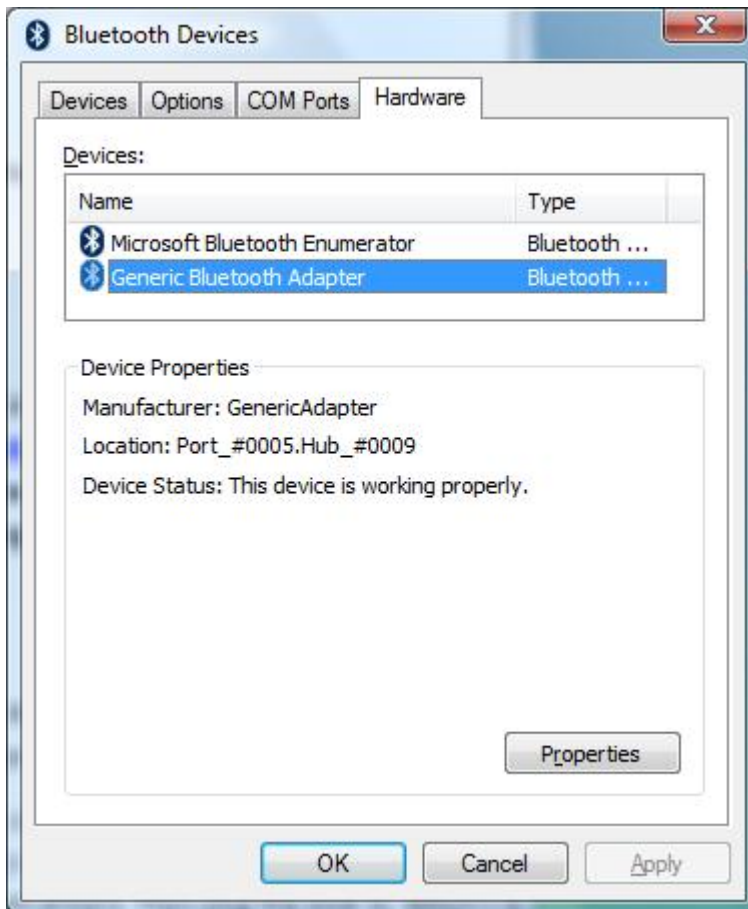


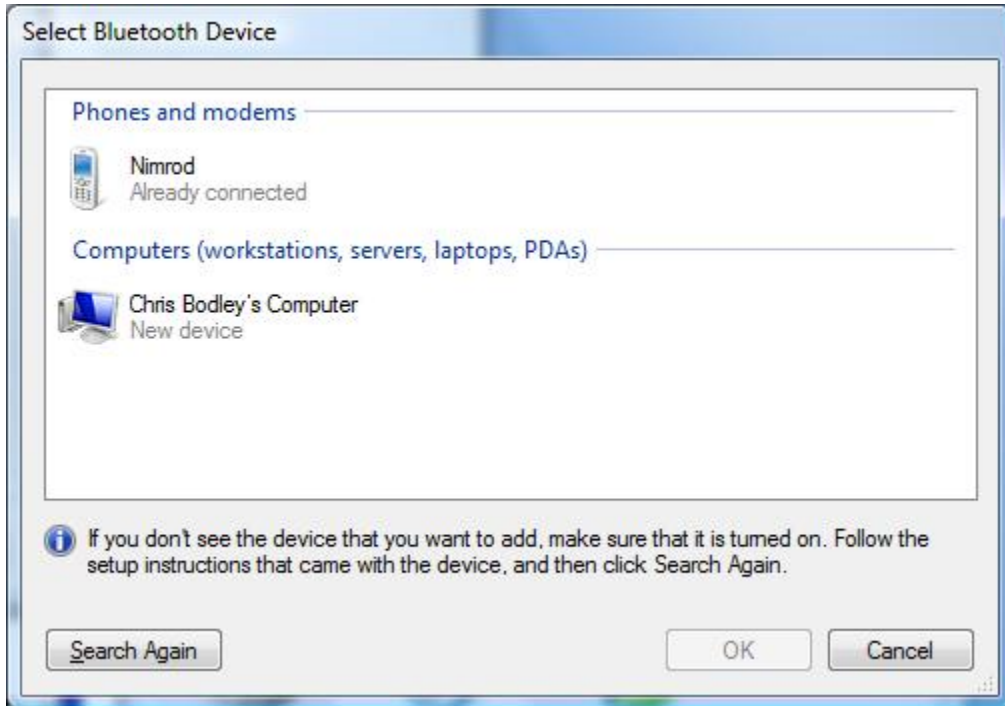
To install, download either the 32-bit or 64-bit package (depending on your version of Vista – If you are unsure it will most likely be 32-bit) and extract all the files somewhere, like for example on your desktop in a folder called Bluetooth drivers. Then plug the stick in, Windows will fail to find the drivers and ask you to either provide a location for them, or provide a CD. Provide the location and give Windows the folder location of the extracted drivers. Windows will now install the drivers and your Dongle will be ready for use.

You should now be up and running with the Windows Bluetooth Interface, which you can find in Control Panel or in the System Tray.

### **The Hardware installed into Windows Vista:**



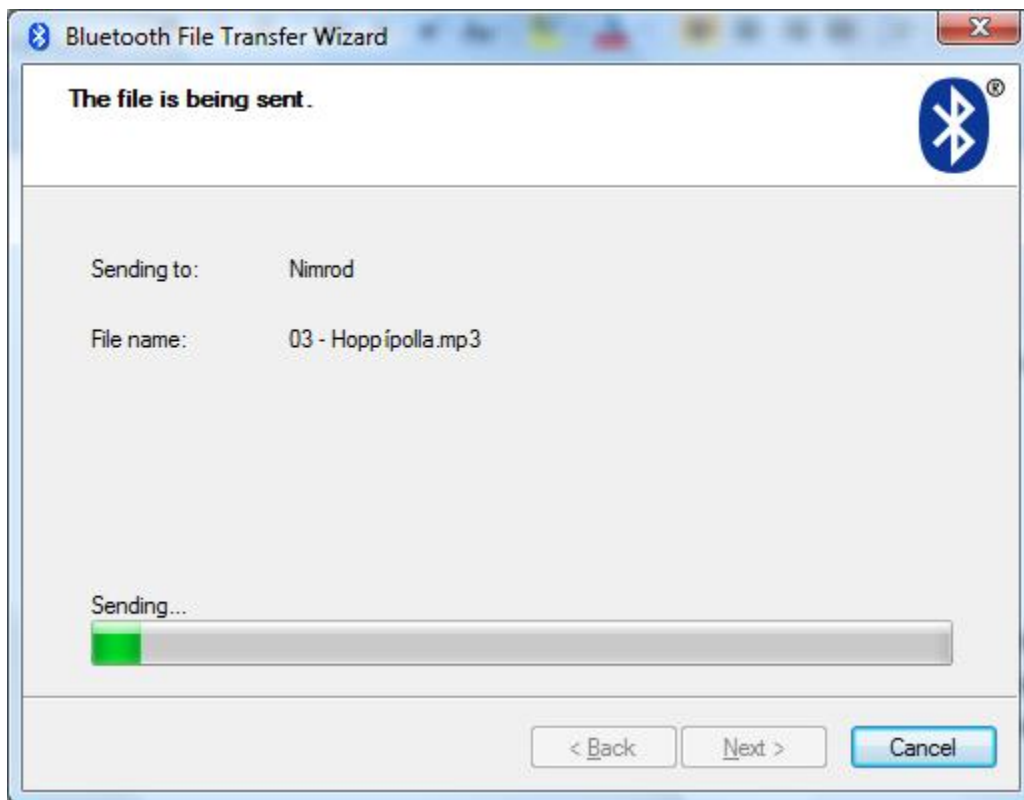
## Bluetooth devices nearby:



## Adding a new device:



## File transfers:



## Working with the Nokia PC Suite:

