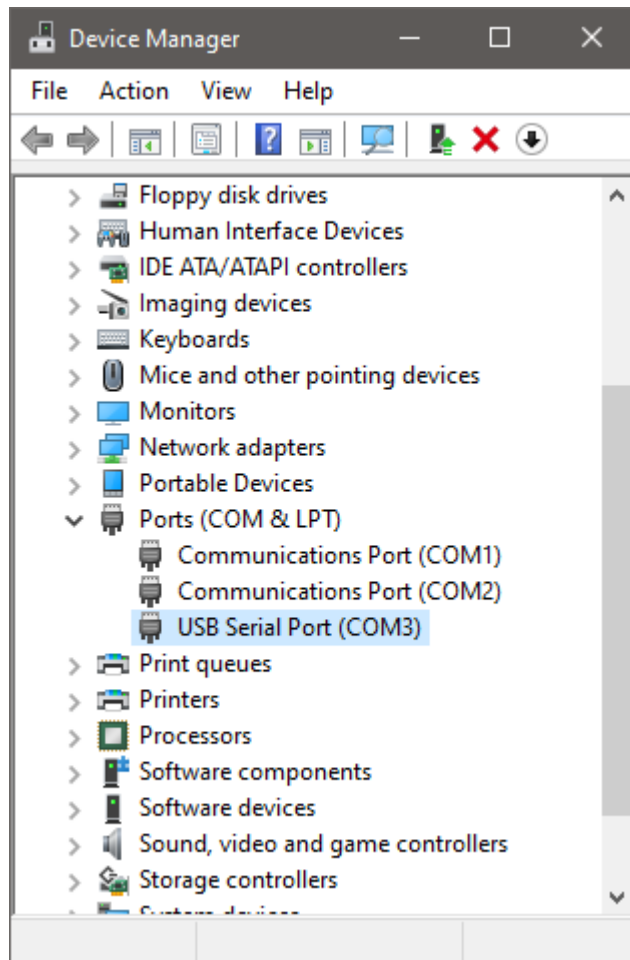


## FW upgrade via serial port (S2B2232FIV2 and S2B2232FEV2)

The FW update is done through the Bluetooth adapter's serial port using a USB to RS232 serial adapter. Check in Windows Device Manager which virtual COM port the USB to serial adapter has created.



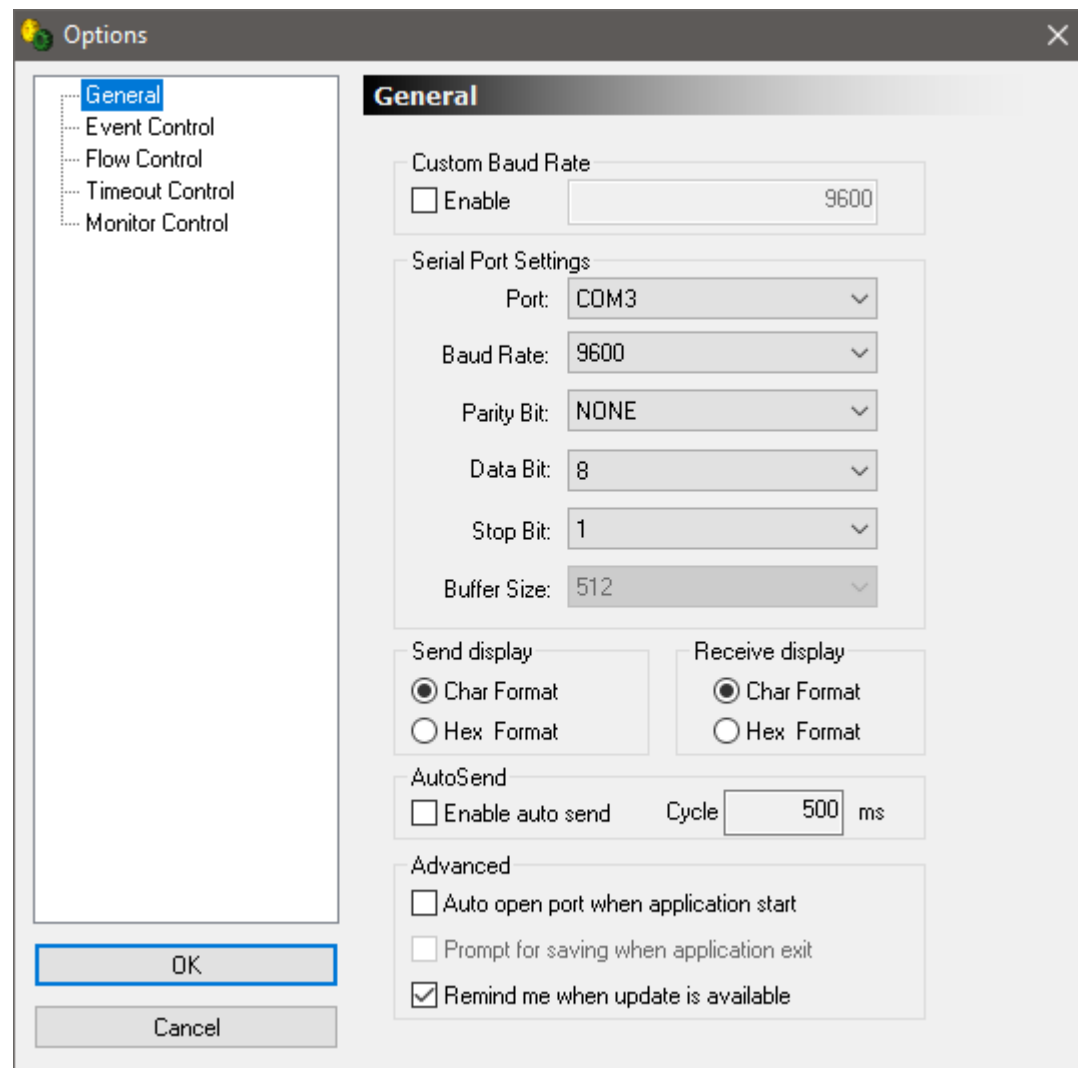
Connect the Bluetooth adapter to your USB to serial adapter directly (no null modem adapter).

The Bluetooth adapter's DTE/DCE switch must be in position "DCE".

Download AccessPort:

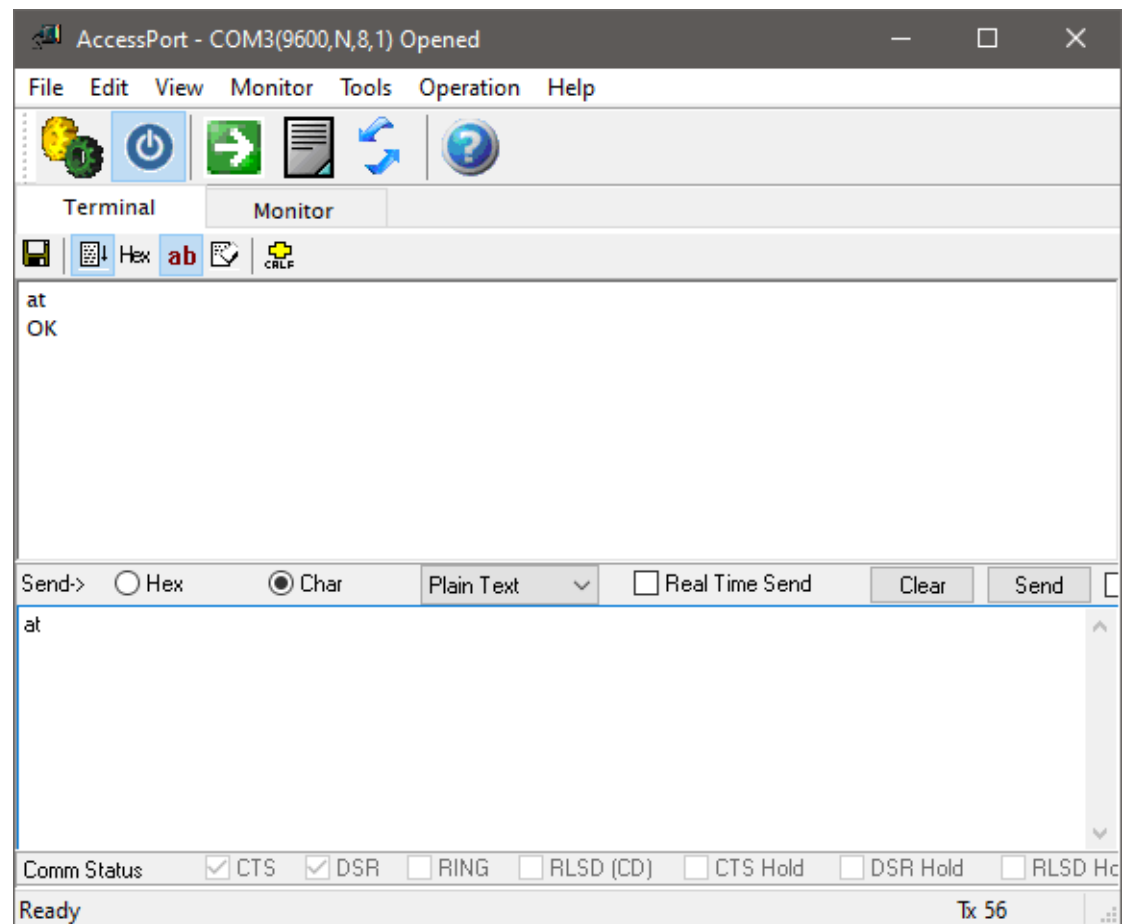
<https://www.usconverters.com/downloads/tools/AccessPort137.zip>

Open AccessPort and select the virtual COM port number created by the USB to serial adapter, and set the other port settings according to below screenshot:



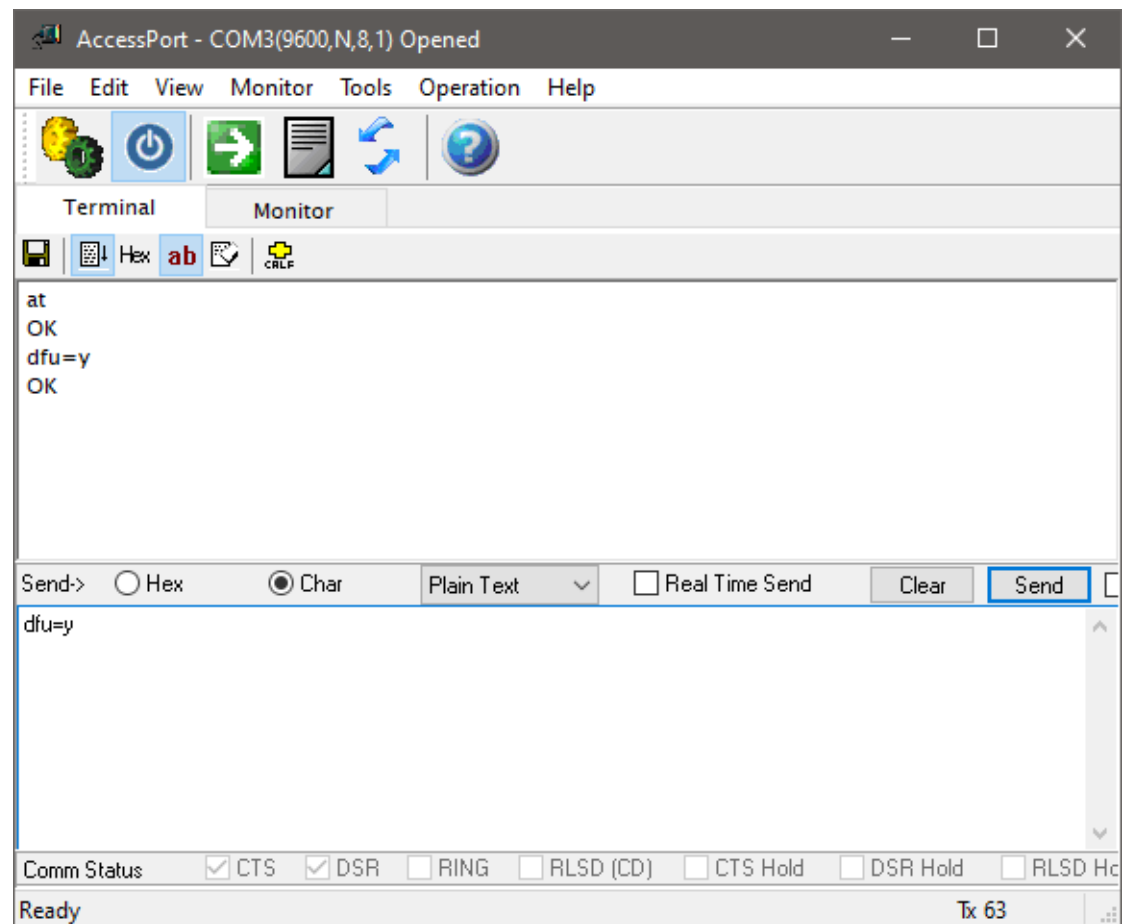
Notice: to speed up the upgrade process you can increase the baud rate to the max. rate which is 230,400 bps. Make sure to change the rate in *both the adapter and in AccessPort*.

Enter the “at” command **and press enter**, in the lower window. Now click the “Send” button:



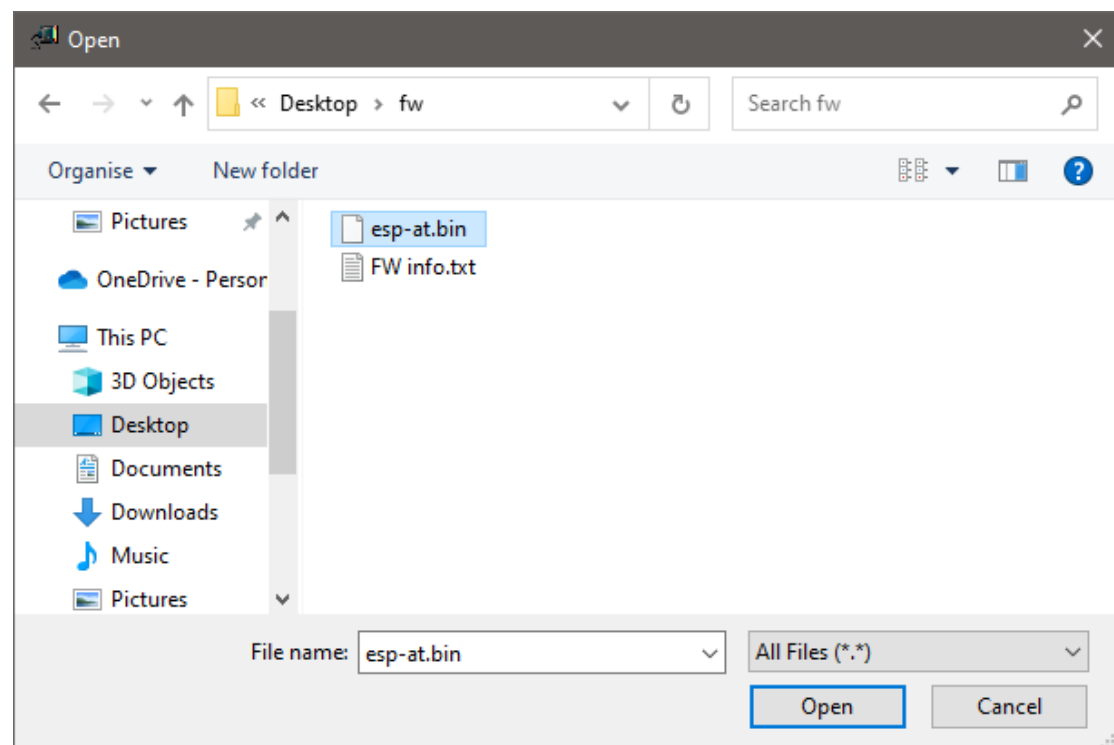
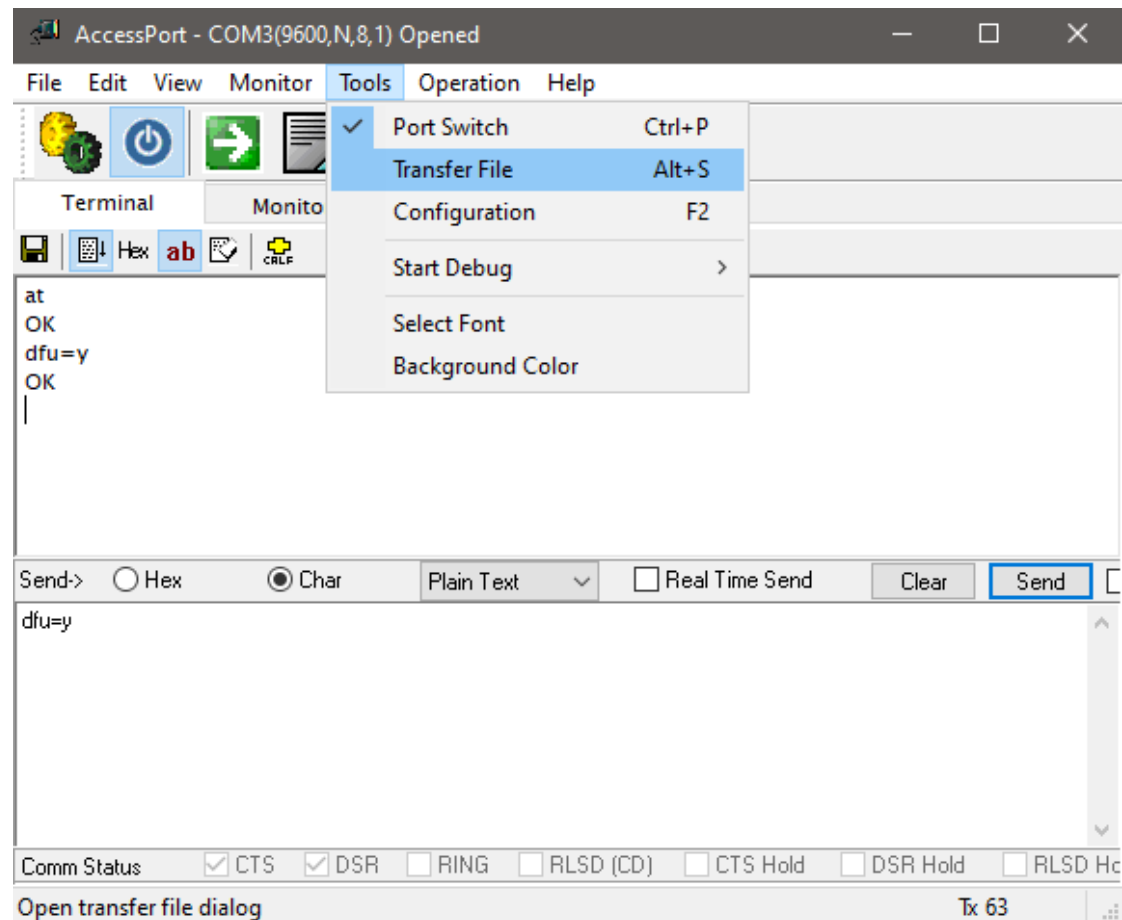
You should now receive “at OK” in the upper window.

Now enter “dfu=y” **and press enter**, in the lower window, and click the “Send” button:

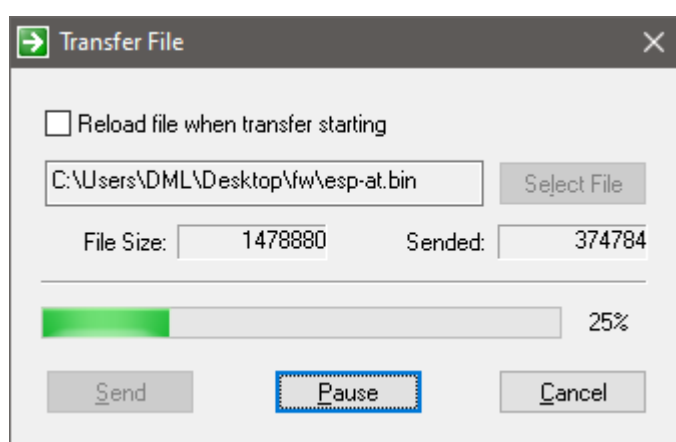
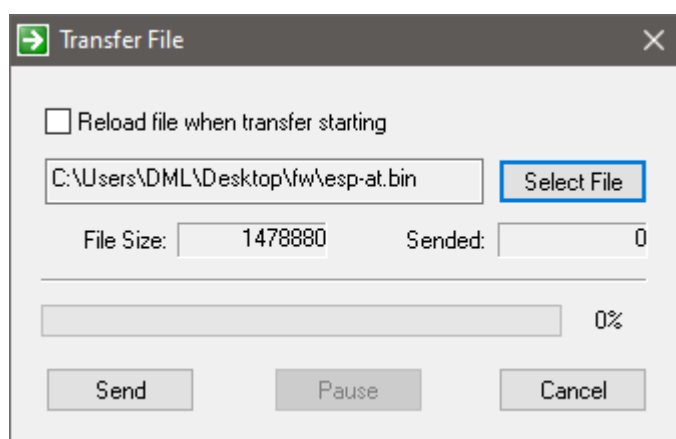


You should receive “dfu=y OK” in the upper window and both LEDs on the adapter should go OFF.

**Within 30 seconds** after you entered the dfu=y command you need to send the update file to the adapter. Click “tools” -> “Transfer File” and select the update file:

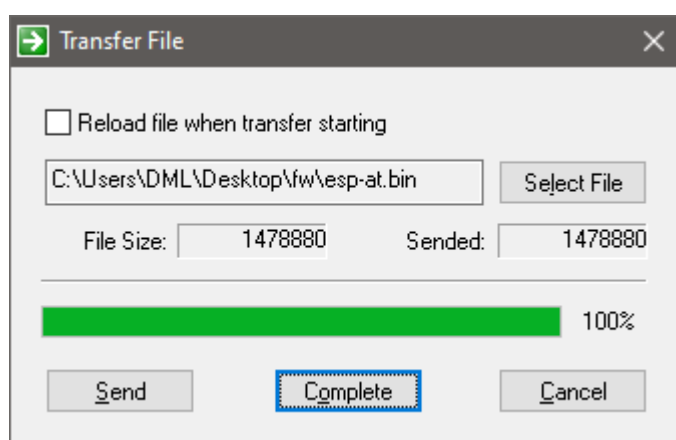


Click “Send” and the update will start:



If selecting the file and clicking the “Send” button takes more then 30 seconds the adapter will automatically go back to work mode and you need to enter the dfu=y command again.

Click the “Complete” button when the transfer is at 100%:



Enter "status=?" to check the settings and firmware version:

