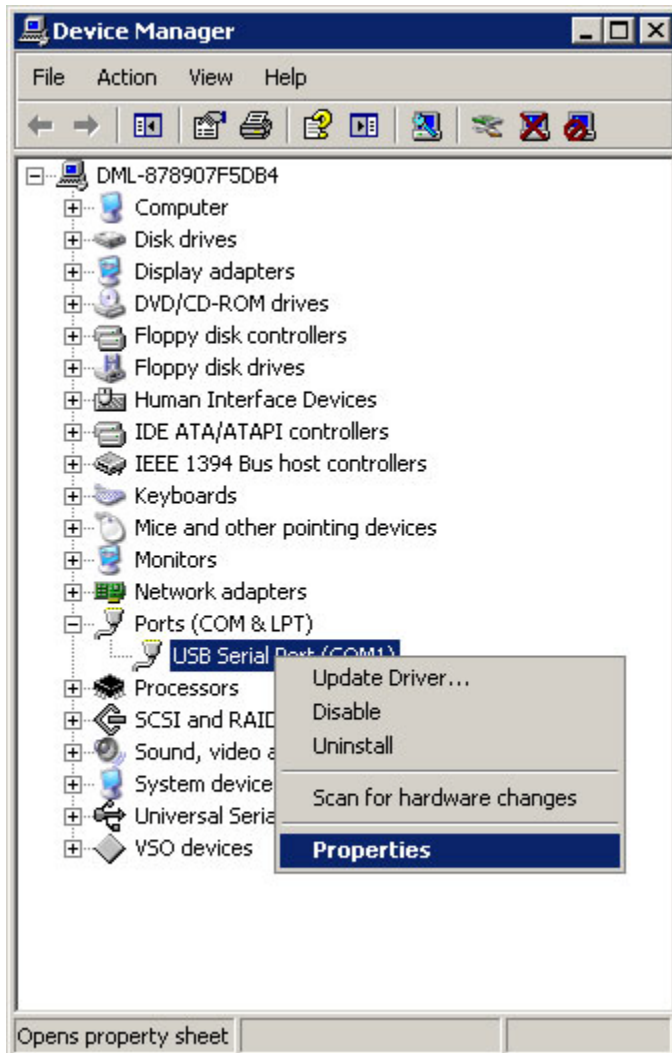
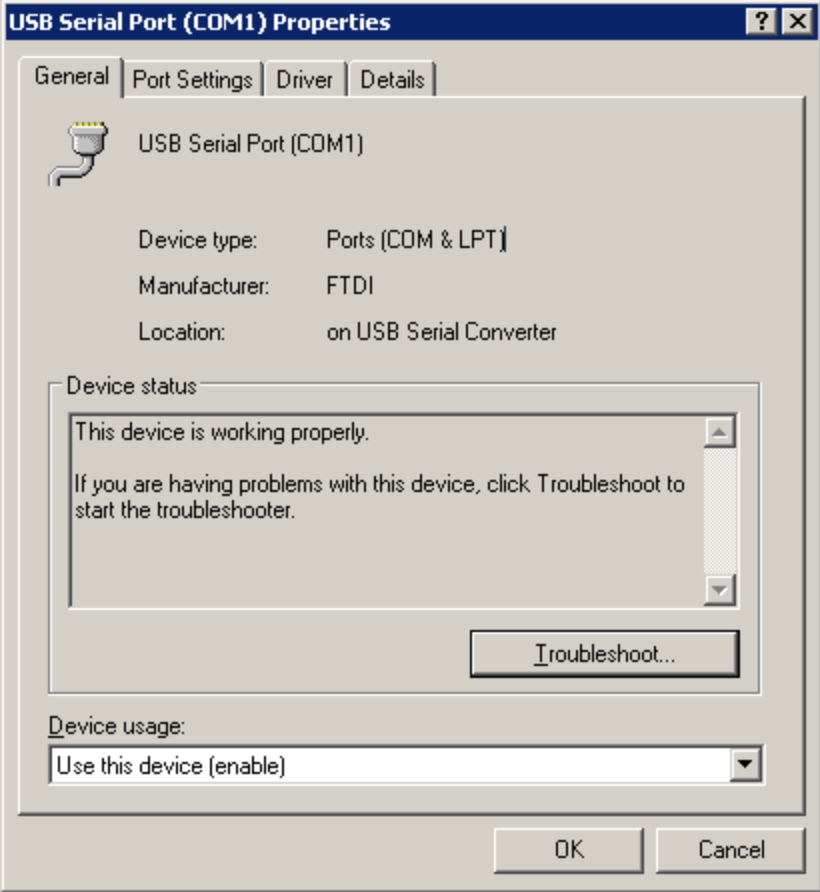
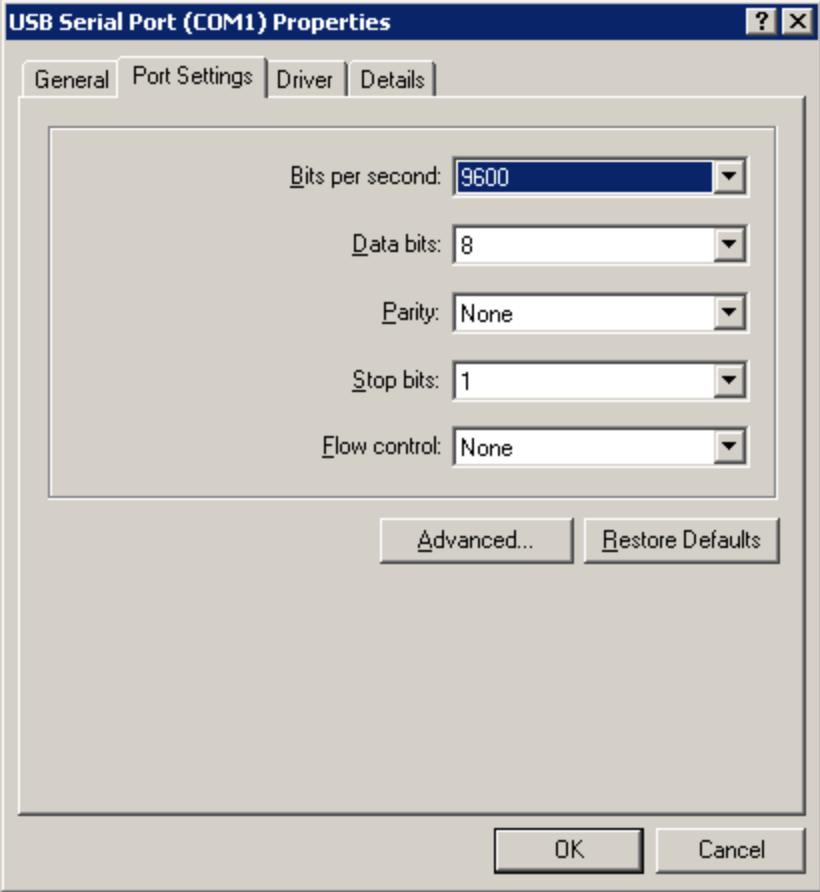


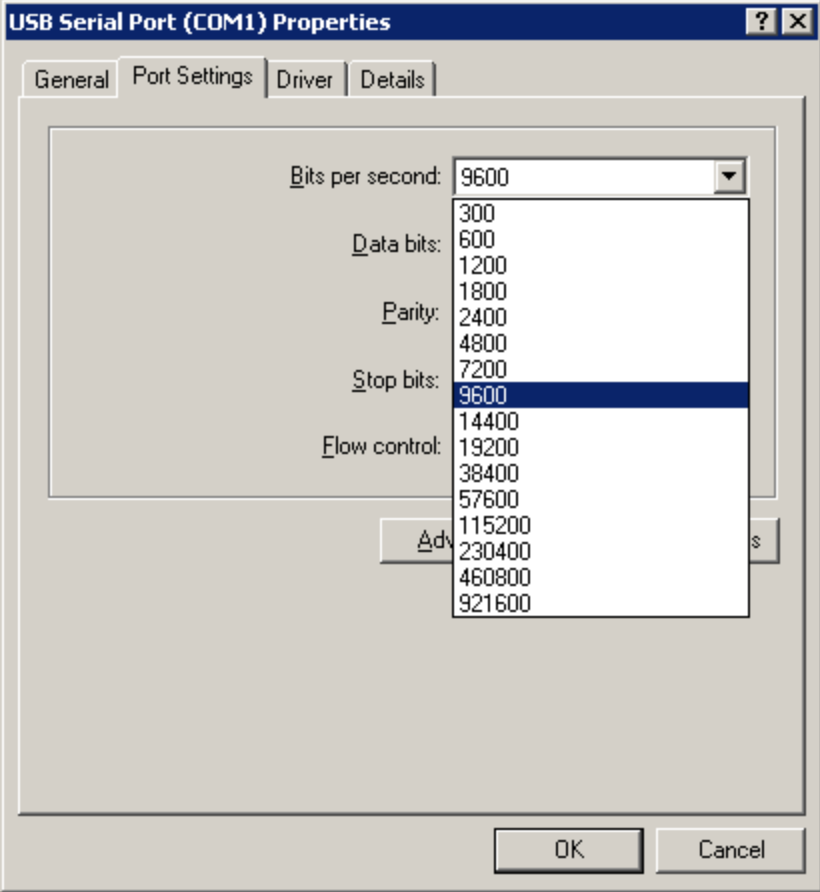
FTDI default driver settings

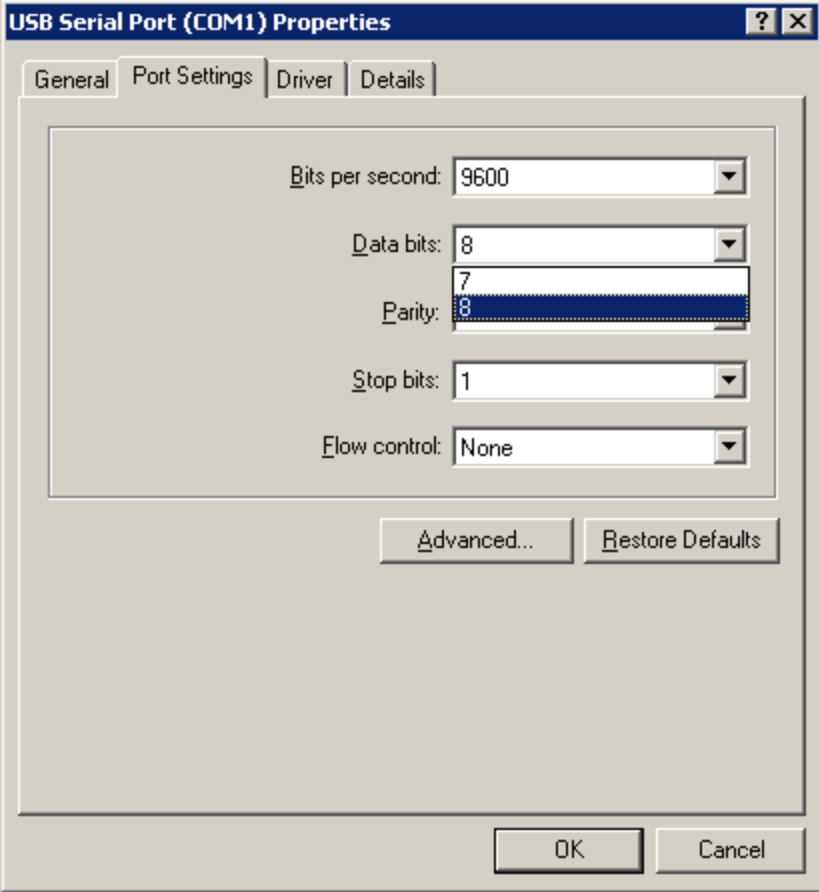
In Windows Device Manager right click on the created COM port and chose Properties

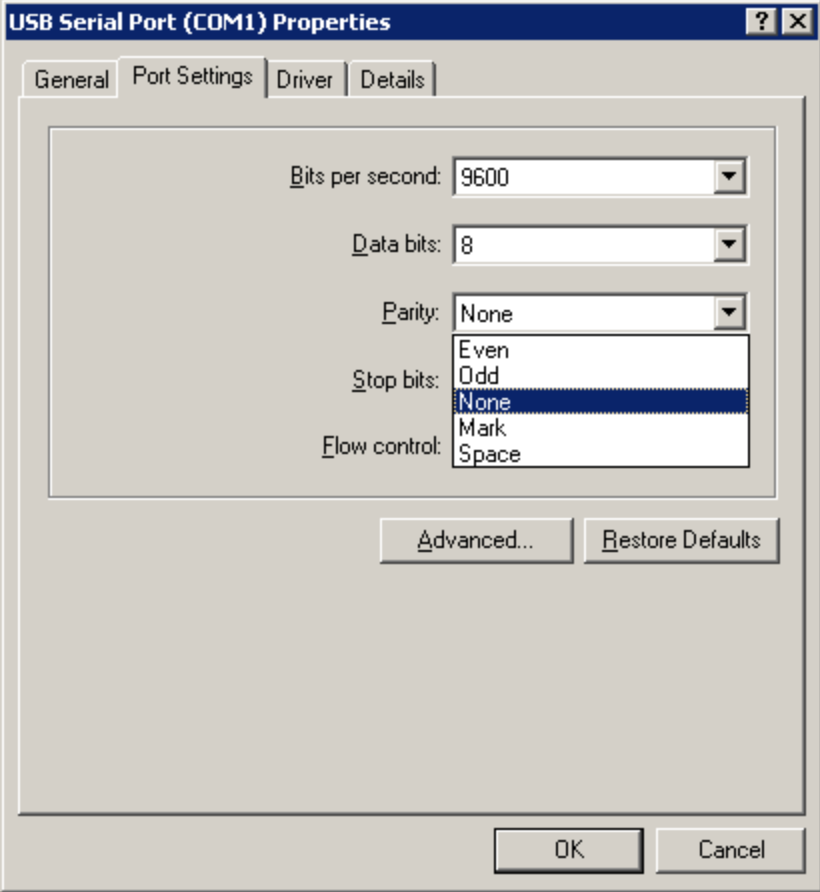


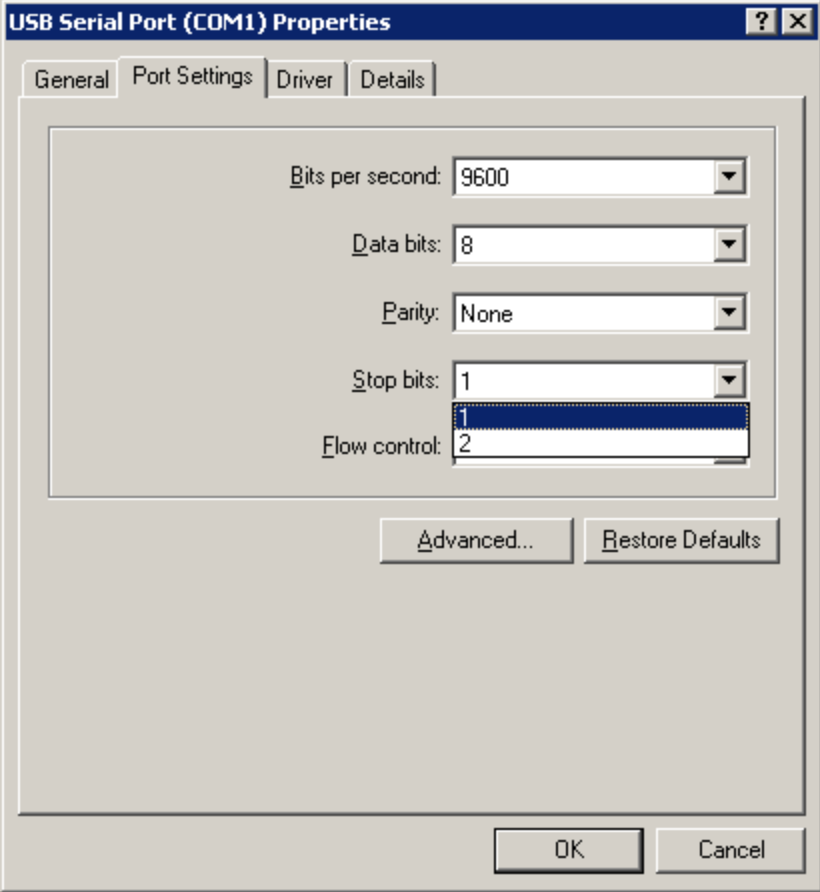


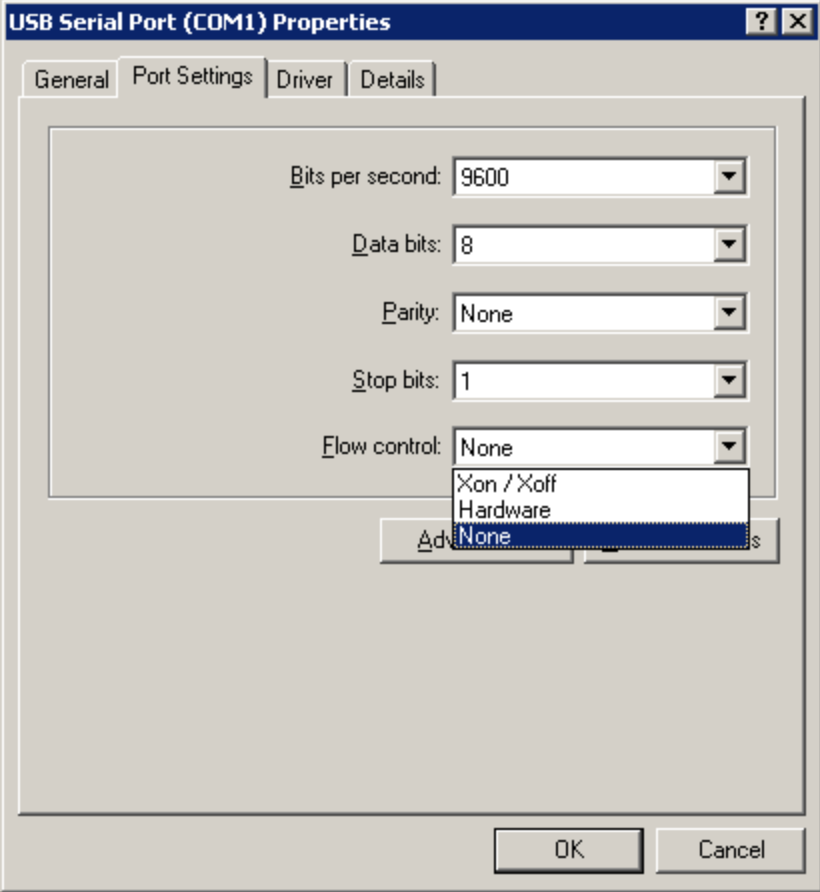












By clicking the Advanced button under the Port Settings tab you get the Advanced settings screen:

Advanced Settings for COM1

COM Port Number: COM1

USB Transfer Sizes
Select lower settings to correct performance problems at low baud rates.
Select higher settings for faster performance.

Receive (Bytes): 4096

Transmit (Bytes): 4096

BM Options
Select lower settings to correct response problems.

Latency Timer (msec): 16

Timeouts

Minimum Read Timeout (msec): 0

Minimum Write Timeout (msec): 0

Miscellaneous Options

Serial Enumerator

Serial Printer

Cancel If Power Off

Event On Surprise Removal

Set RTS On Close

Disable Modem Ctrl At Startup

OK
Cancel
Defaults

COM port number: COM1 to COM256

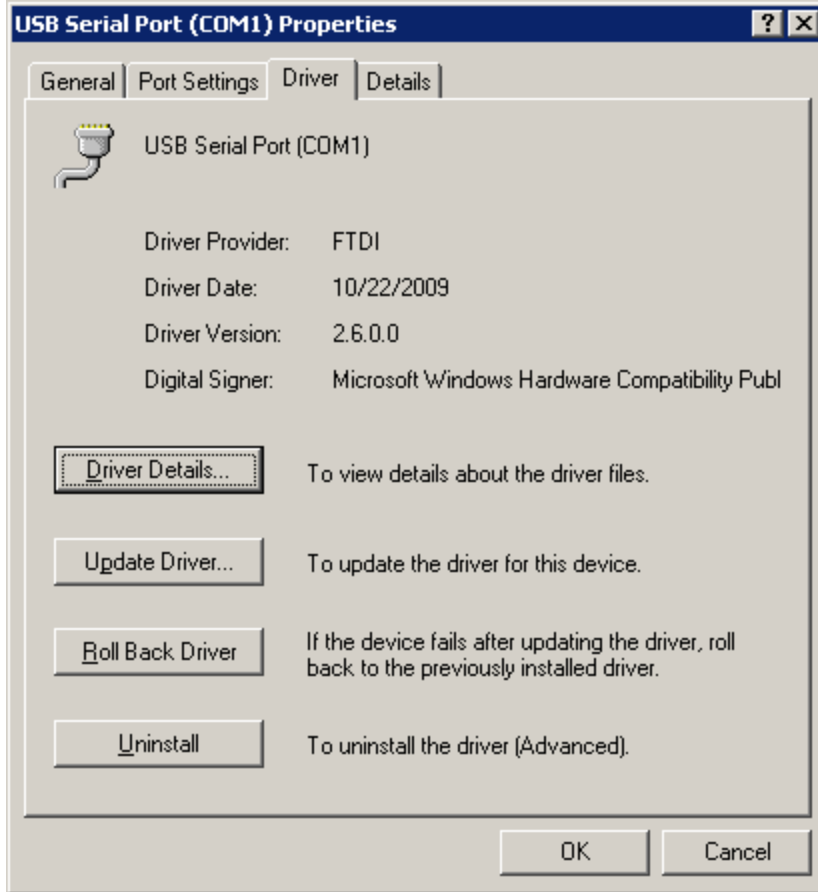
Receive (Bytes): 64 to 4096

Transmit (Bytes): 64 to 4096

Latency timer (msec): 1 to 255

Minimum Read Timeout (msec): 0 to 10000

Minimum Write Timeout (msec): 0 to 10000



Driver Details button under Drivers Tab:

