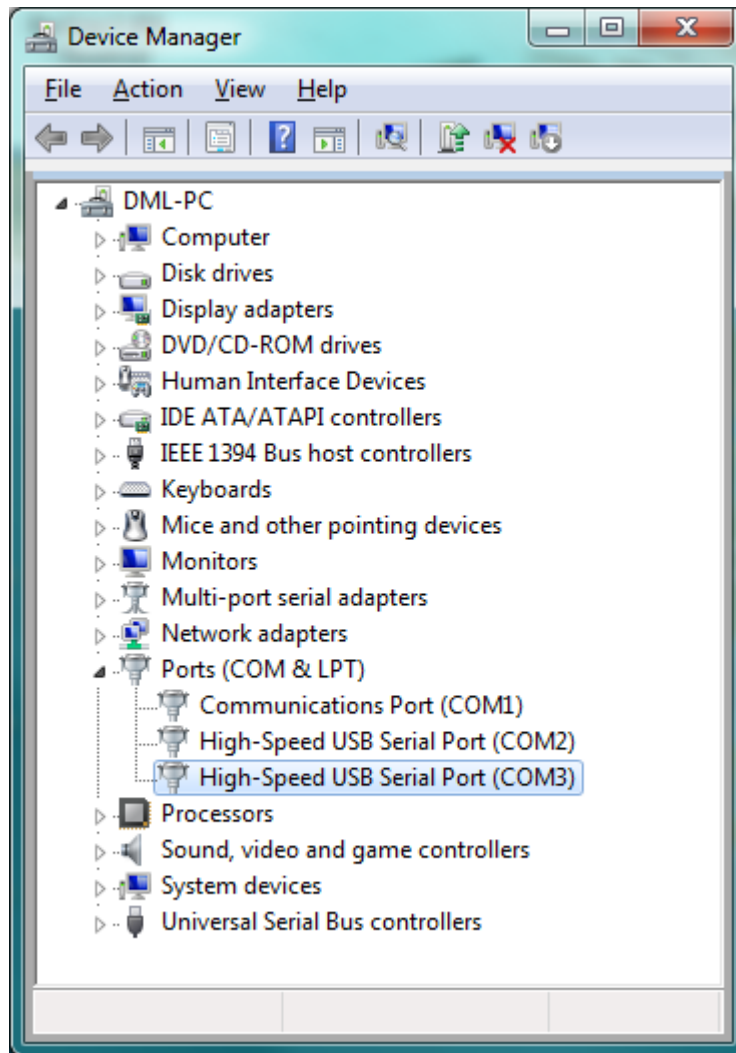
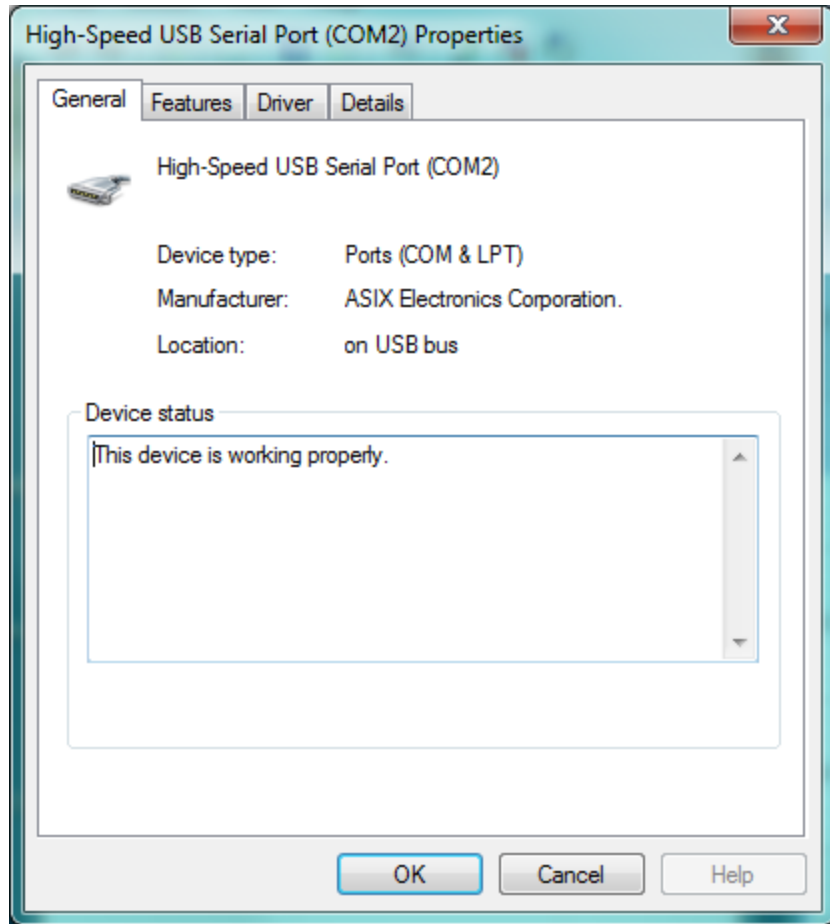
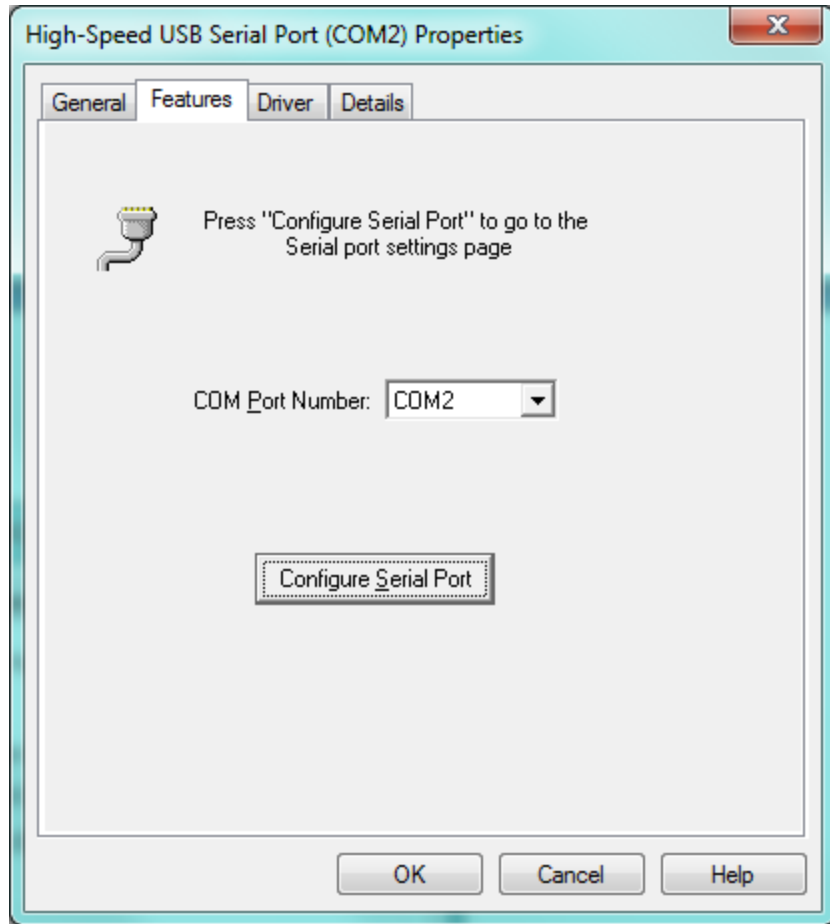
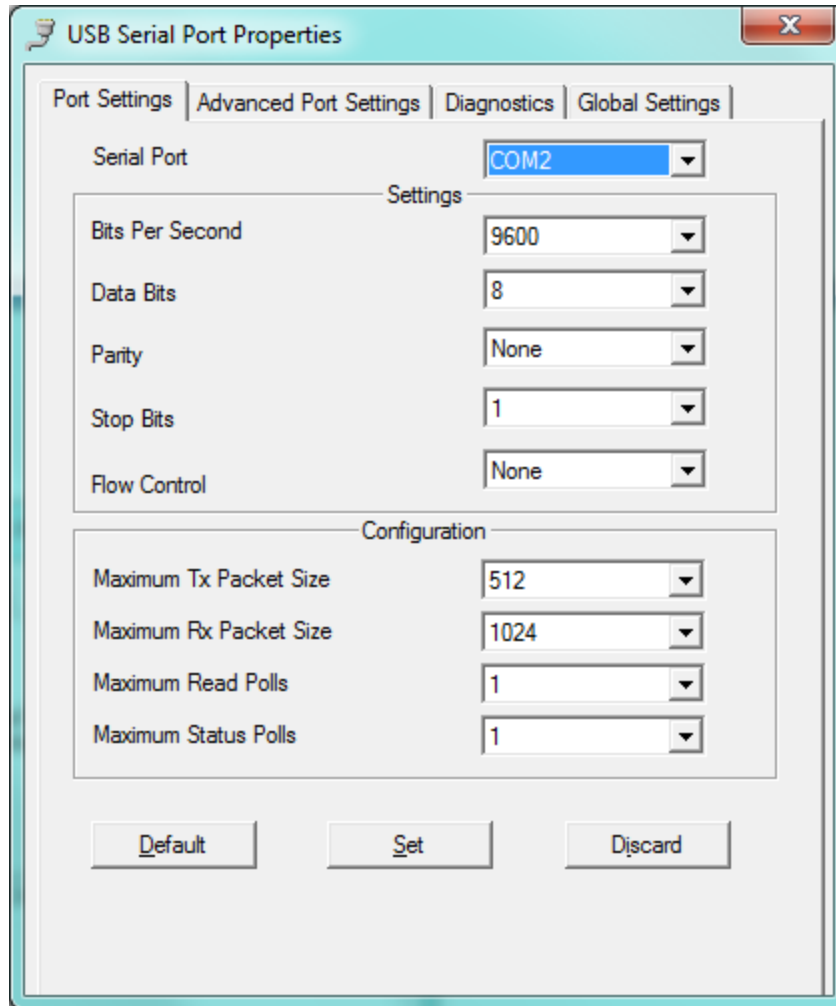


Moschip/ASIX MCS7820CV Default Driver Settings









Baud rate: 75 – 921600

Data bits: 5, 6, 7, 8

Parity: None, Odd, Even, Mark, Space

Stop bits: 1, 1.5, 2

Flow Control: Xon / Xoff, Hardware, None

Maximum Tx Packet Size: 1 to 524288

Maximum Rx Packet Size: 1 to 524288

Maximum Read Polls: 1 to 10

Maximum Status Polls: 1 to 10

